

**NOTES:**

1. IMAGE PROVIDED BY ESRI, DIGITALGLOBE, ET AL
2. FIGURE ADAPTED FROM REMEDIAL INVESTIGATION REPORT (USACE, 2018a)

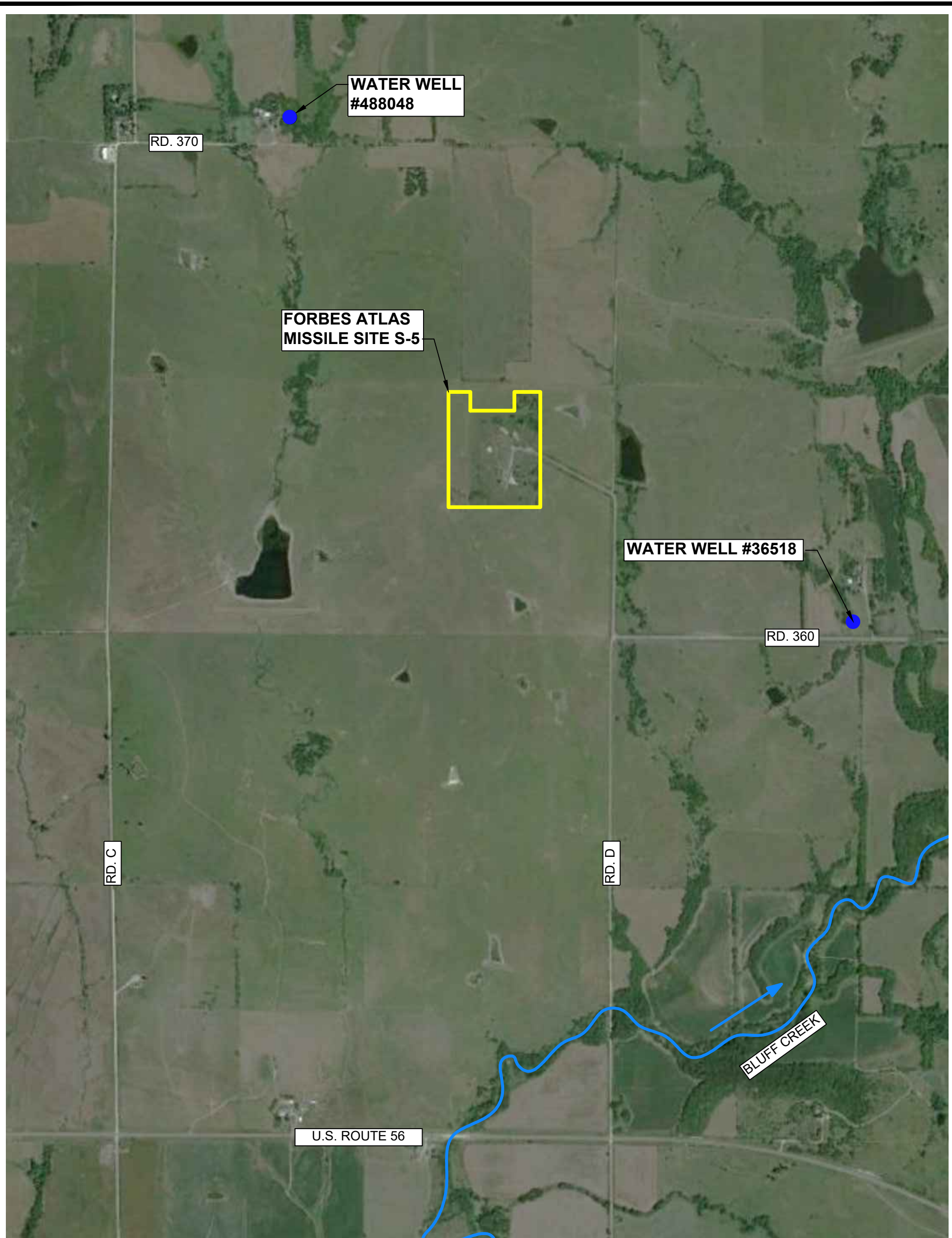


**US Army Corps  
of Engineers**®  
Kansas City District




FIGURE 1

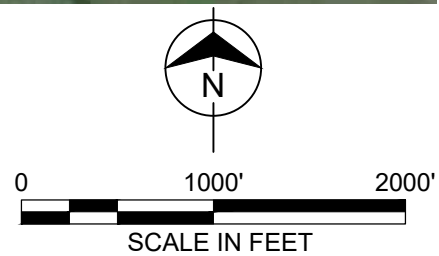
REGIONAL LOCATION MAP  
FORBES ATLAS S-5  
ALLEN, KANSAS





**LEGEND**

-  WATER WELLS
-  RIVER
-  FLOW DIRECTION

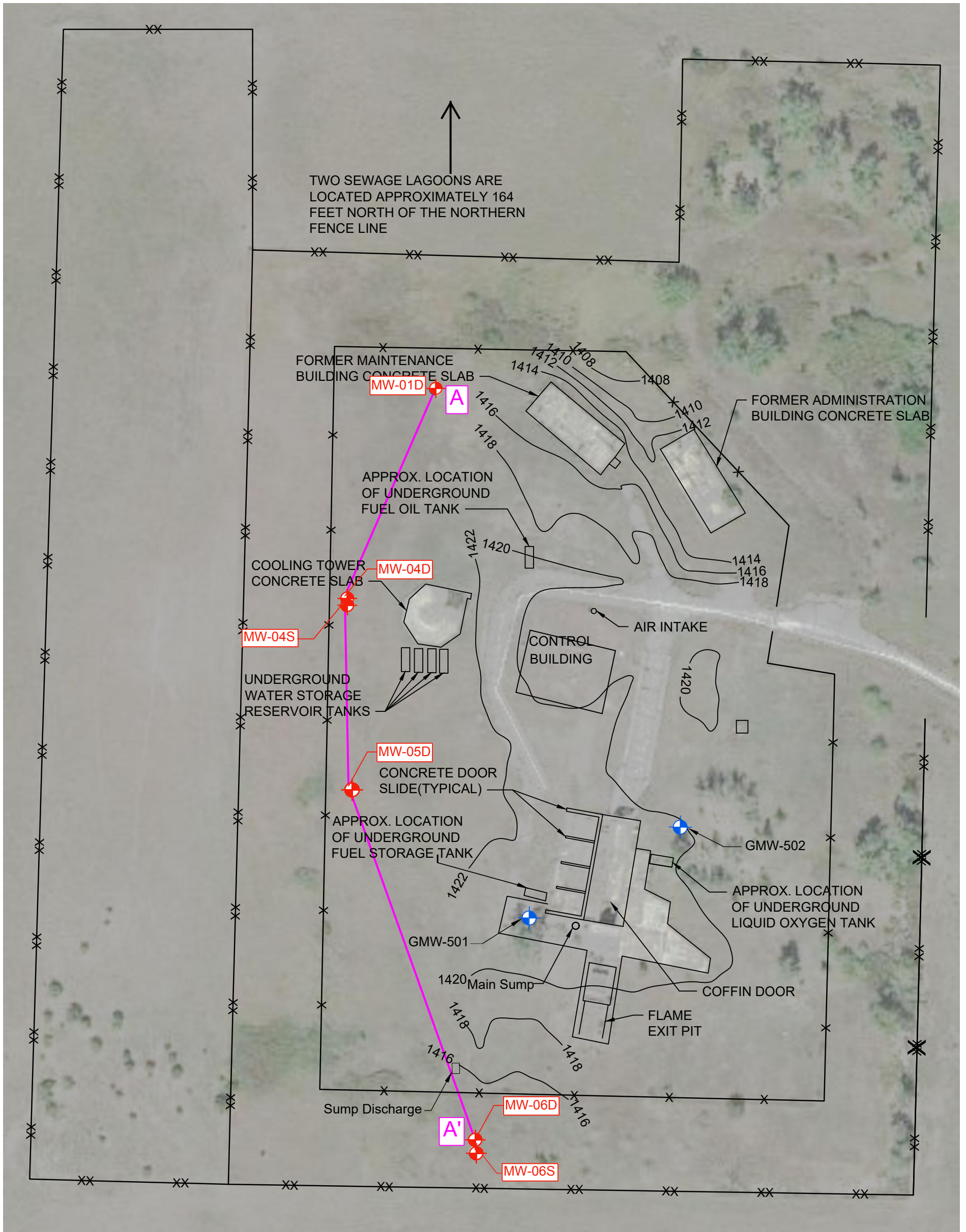


**NOTE:**

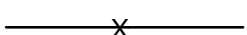





1. AERIAL IMAGE PROVIDED BY GOOGLE EARTH.



**FIGURE 2**  
 OFF SITE KANSAS  
 WATER WELLS  
 FORBES ATLAS S-5  
 ALLEN, KANSAS

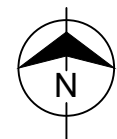


**LEGEND:**

-  CHAIN LINK FENCE
-  BARB WIRE FENCE
-  CONTOUR & ELEVATION (ft AMSL)
-  CROSS SECTION A-A'
-  HISTORICAL MONITORING WELL
-  WELLS IN CROSS SECTION A-A'

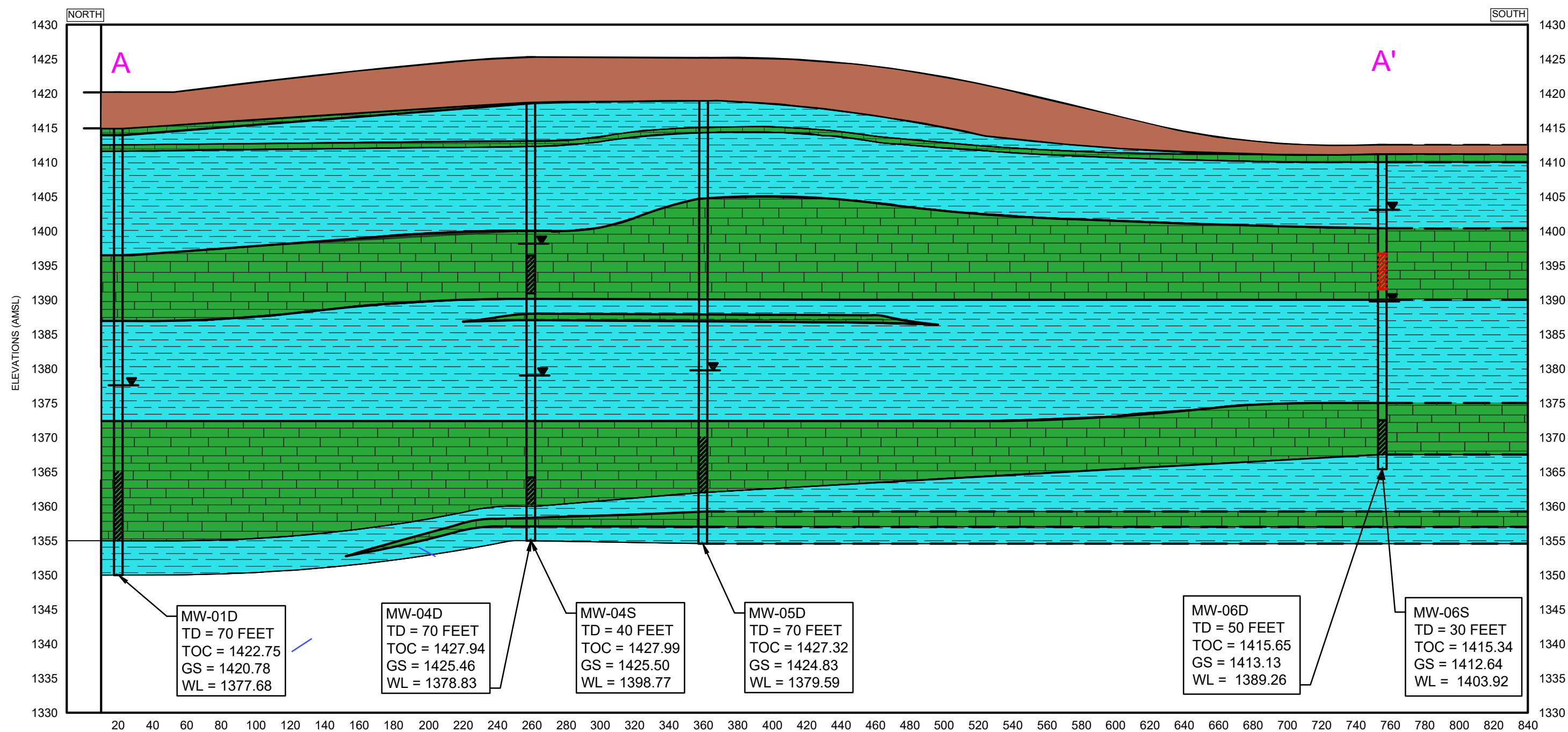
**NOTES:**

1. SITE PLAN AND ELEVATIONS BASED ON TOPOGRAPHIC SURVEY PERFORMED BY FORGY SURVEYING, ON JULY 13, 1990. FIGURE ADAPTED FROM REMEDIAL INVESTIGATION (USACE, 2018a).
2. AERIAL IMAGE PROVIDED BY GOOGLE EARTH.



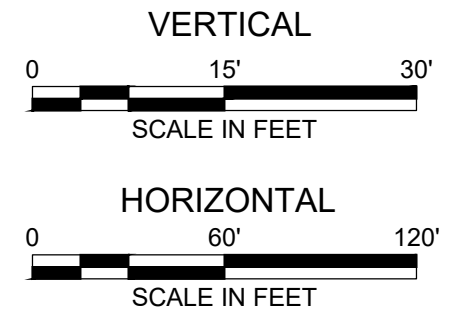
**FIGURE 3**  
**FORMER SITE LAYOUT**  
**FORBES ATLAS S-5**  
**ALLEN, KANSAS**





**LEGEND:**

- CLAY
- LIMESTONE
- SHALE
- SCREENED INTERVAL
- SCREENED INTERVAL WITH KNOWN CONTAMINATION
- STATIC WATER LEVEL (FT. AMSL). MEASURED MARCH 27, 2017.
- TD TOTAL DEPTH
- TOC TOP OF CASING
- GS GROUND SURFACE
- WL WATER LEVEL



**FIGURE 4**  
GEOLOGICAL CROSS SECTION A-A' FORBES ATLAS S-5 ALLEN, KANSAS