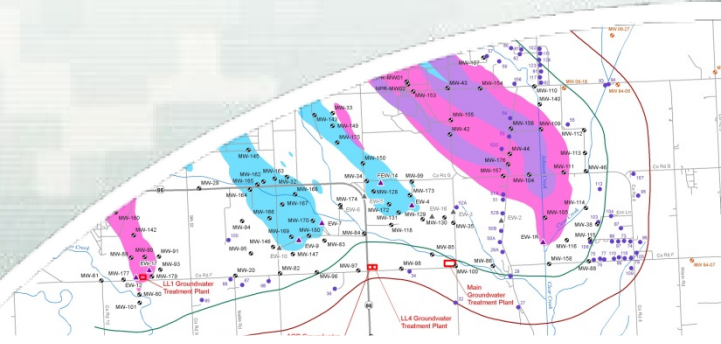


# Former Nebraska Ordnance Plant 2020 TCE and RDX Concentrations

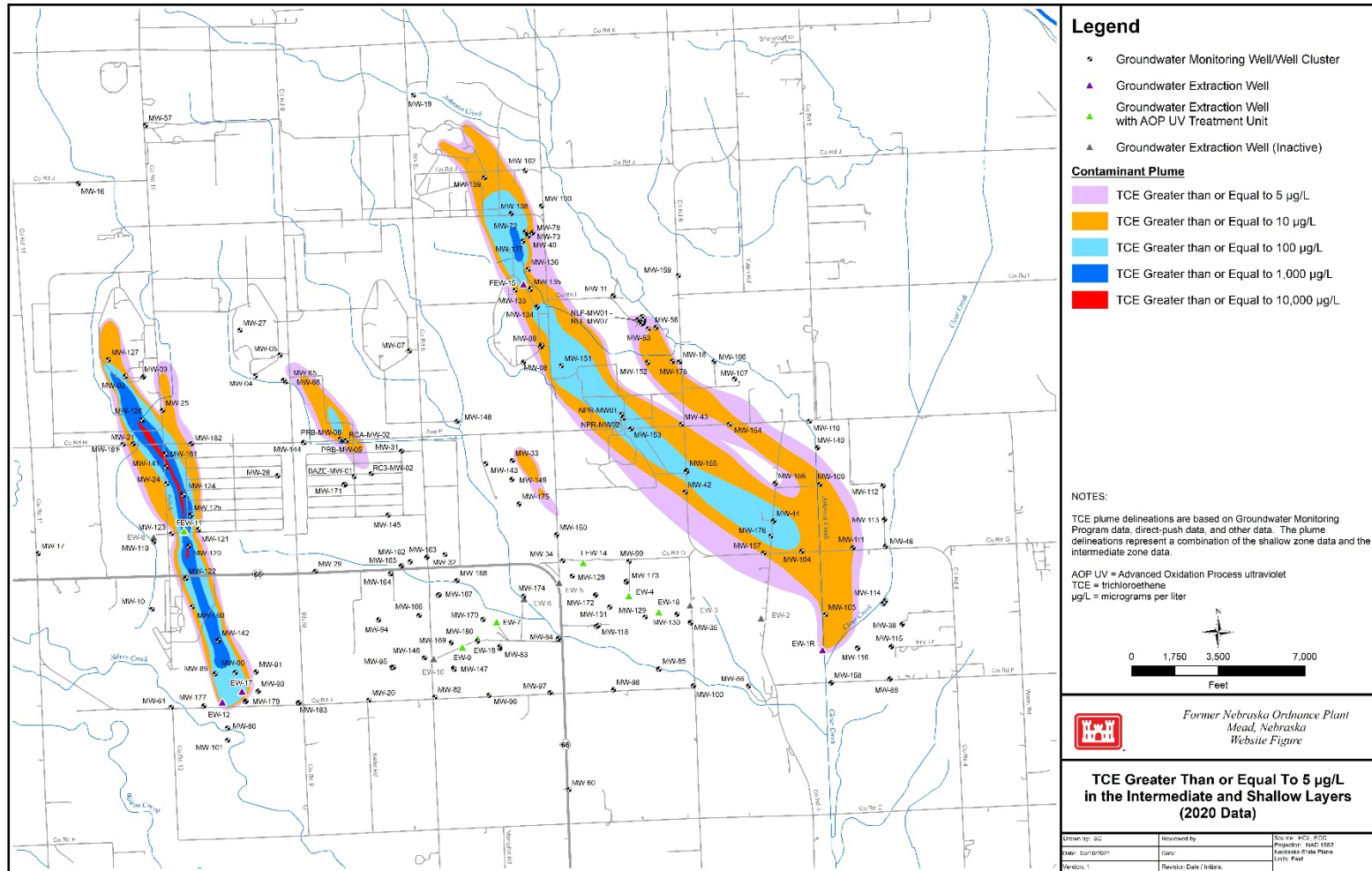


®

US Army Corps of Engineers  
**BUILDING STRONG**®

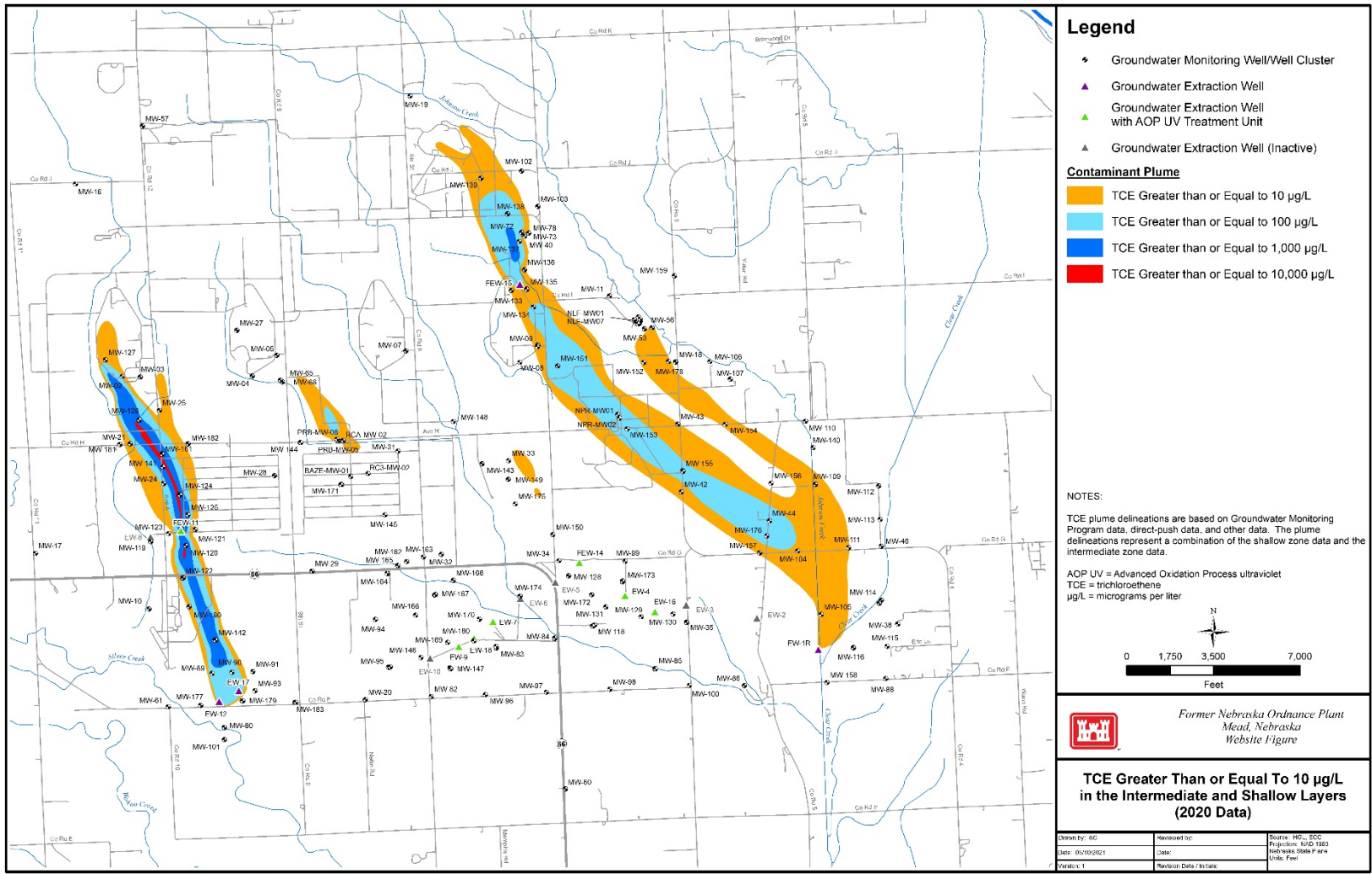
# 2020 TCE Concentrations

# TCE Greater Than or Equal to 5 µg/L



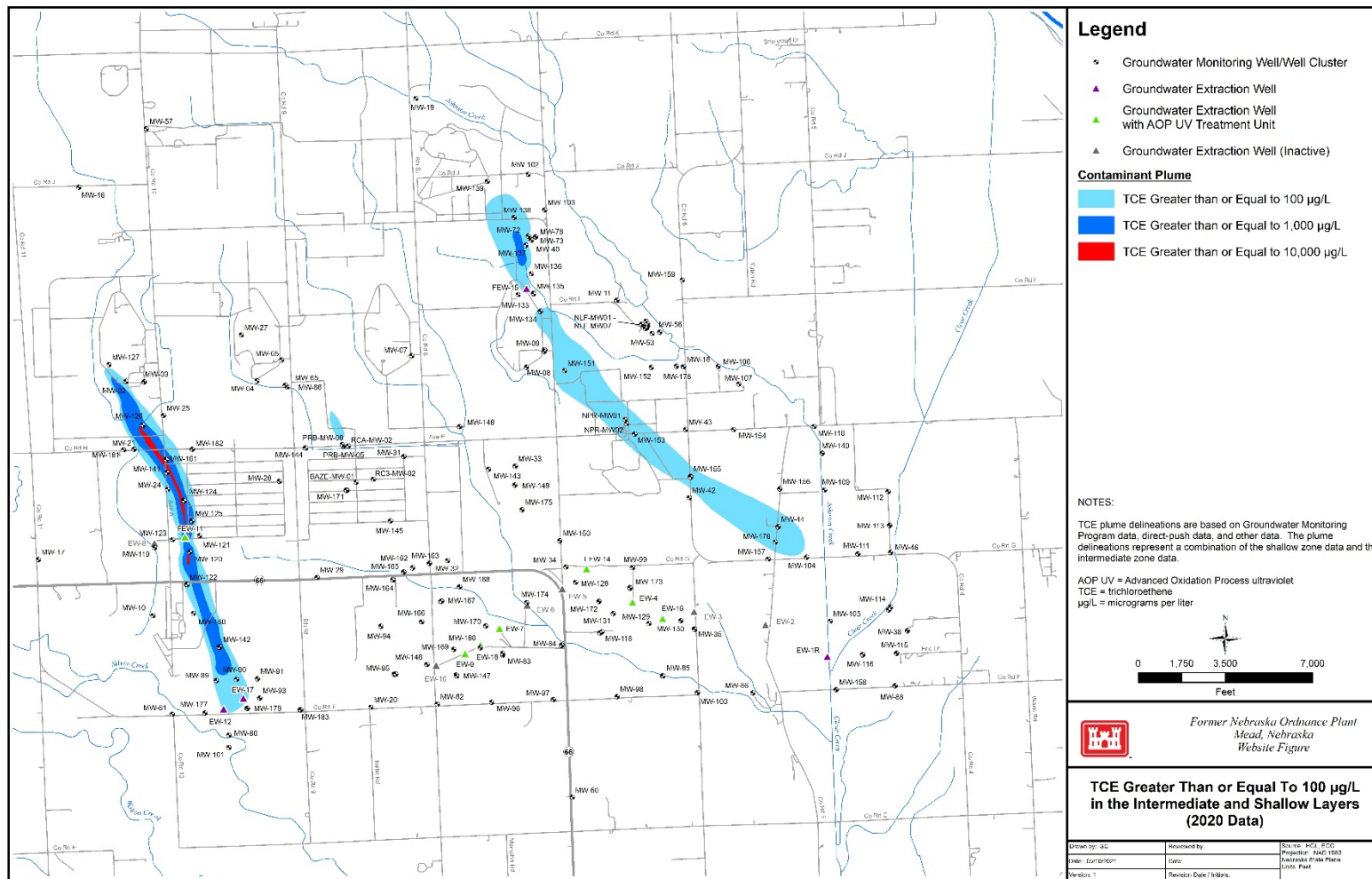
\\csm\share\env\corp\eng\enr\enr\GIS\MapDocs\Fig\2021\enr\_20211106\000001\enr\TCE\_5µg\_L.mxd

# TCE Greater Than or Equal to 10 µg/L



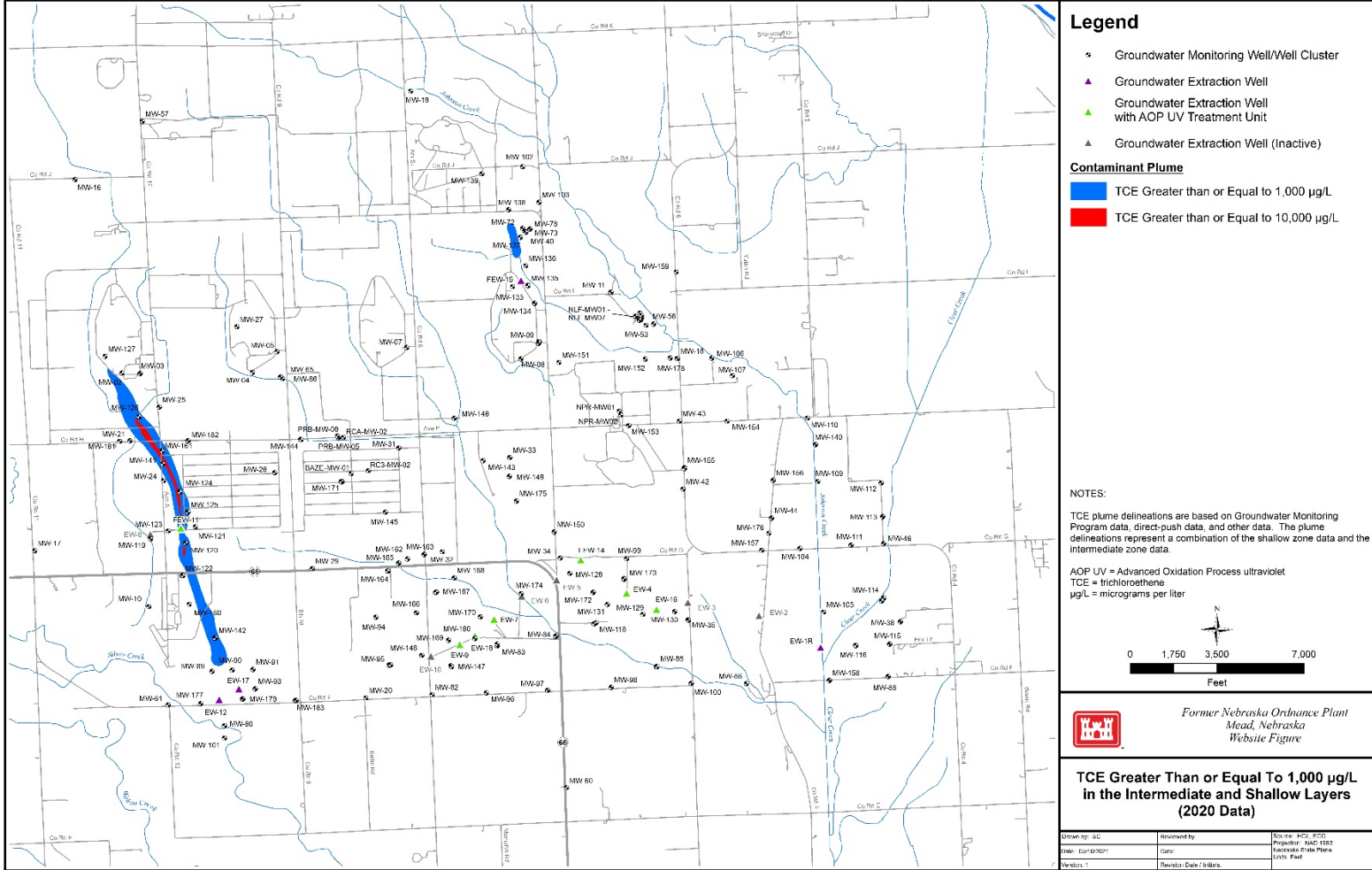
V:\101612\_05W\_02095\_01\_CWS\NEDS\_04\SAI\_01V\NewOrdnancePlant\MapData\17019\TCE\2020\TCE\_GTE\_10.mxd

# TCE Greater Than or Equal to 100 µg/L



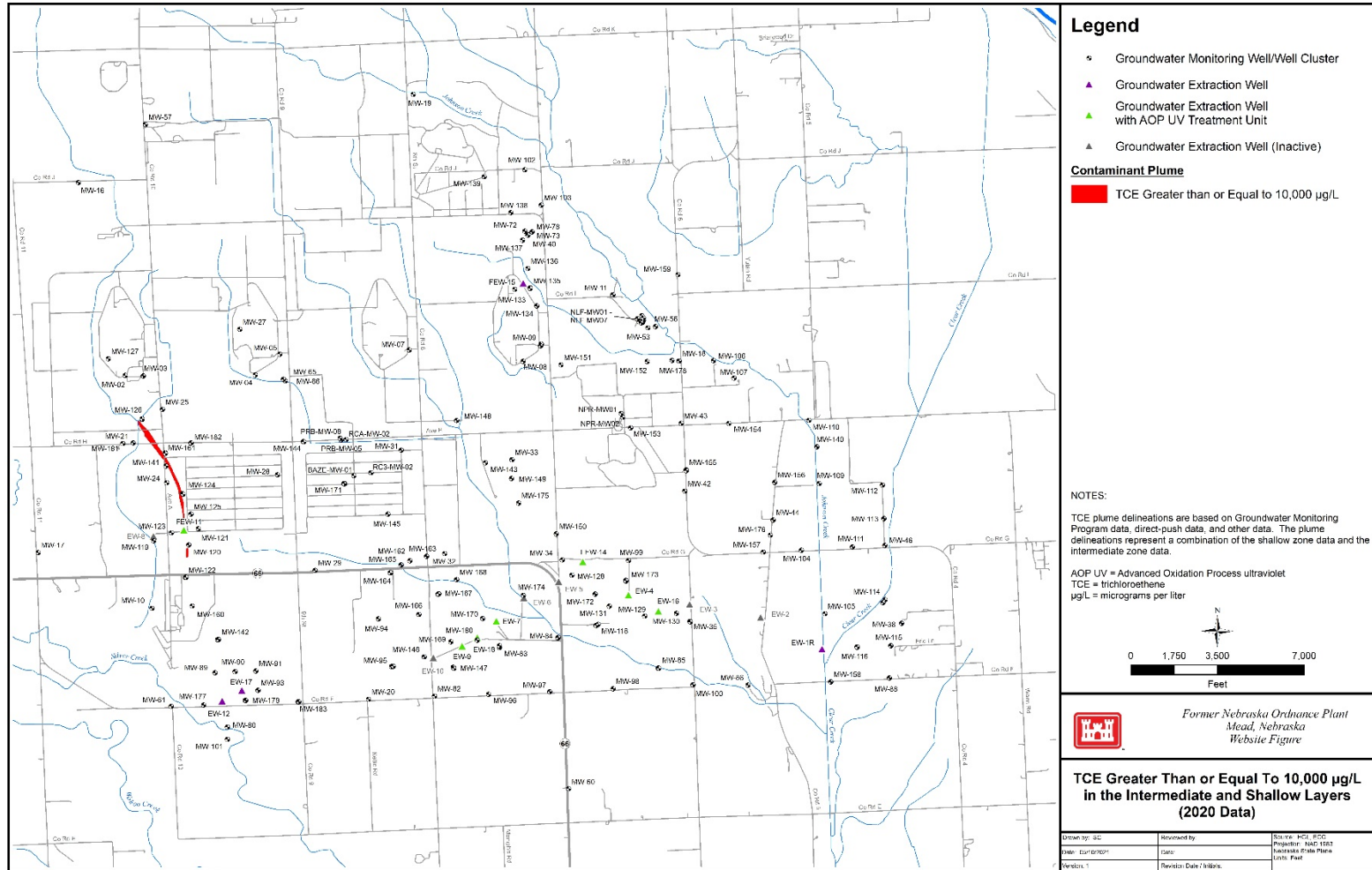
\\c:\msb\sc\ar\of\_corp\_of\_engineers\_sandusky\GIS\Nebraska Ordnance Plant\Mead\Drawings\70781\over\_2020\222136\sc0001\10\over\TCE\_GTE\_100.kwd

# TCE Greater Than or Equal to 1,000 µg/L



V:\CME\02\_AIR\UT\_CONF\02\_ENGINEERS\_KANSAS\_CITY\Nebraska Ordnance Plant\Mead\Drawings\70781\cont\_figures\2021\06\01\00001\00001\TCE\_GTE\_1000\_F01

# TCE Greater Than or Equal to 10,000 µg/L

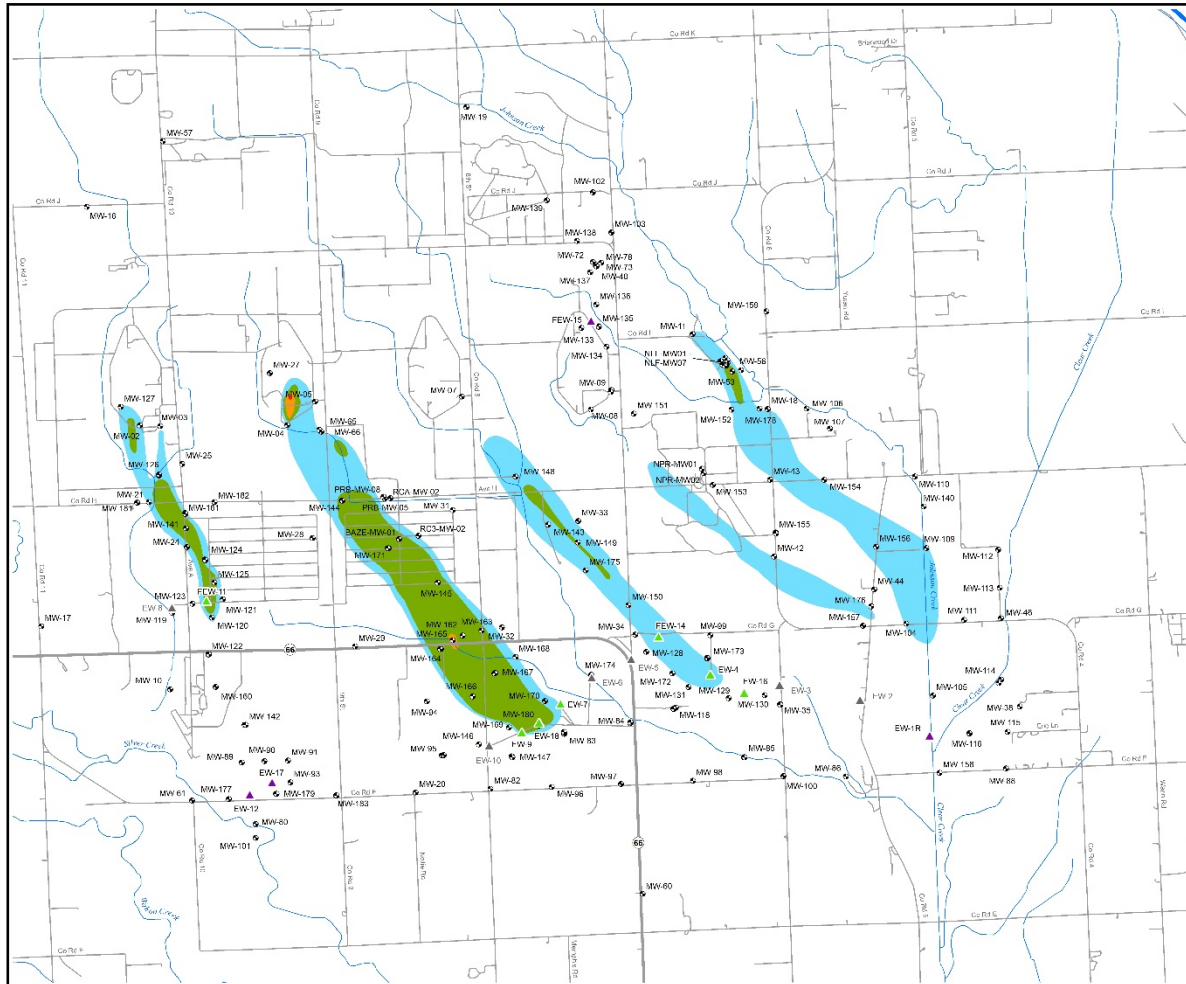


\\csm\share\envr\corp\of\_engineers\landas\GIS\workspace\workspace\Projects\MeD\Drawings\70781\envr\_2020\1583\1047-1583\1047-1583\TCE\_10000\_2020\_1583

# 2020 RDX Concentrations



# RDX Greater Than or Equal to 2 $\mu\text{g}/\text{L}$



**Legend**

- ⊛ Groundwater Monitoring Well/Well Cluster
- ▲ Groundwater Extraction Well
- ▲ Groundwater Extraction Well with AOP UV Treatment Unit
- ▲ Groundwater Extraction Well (Inactive)

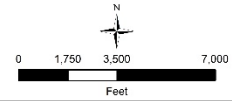
**Contaminant Plume**

- RDX Greater than or Equal to 2  $\mu\text{g}/\text{L}$
- RDX Greater than or Equal to 10  $\mu\text{g}/\text{L}$
- RDX Greater than or Equal to 50  $\mu\text{g}/\text{L}$
- RDX Greater than or Equal to 100  $\mu\text{g}/\text{L}$

**NOTES:**

RDX plume delineations are based on Groundwater Monitoring Program data, direct-push data, and other data. The plume delineations represent a combination of the shallow zone data and the intermediate zone data.

AOP UV = Advanced Oxidation Process ultraviolet  
 RDX = hexahydro-1,3,5-trinitro-1,3,5-triazine  
 $\mu\text{g}/\text{L}$  = micrograms per liter



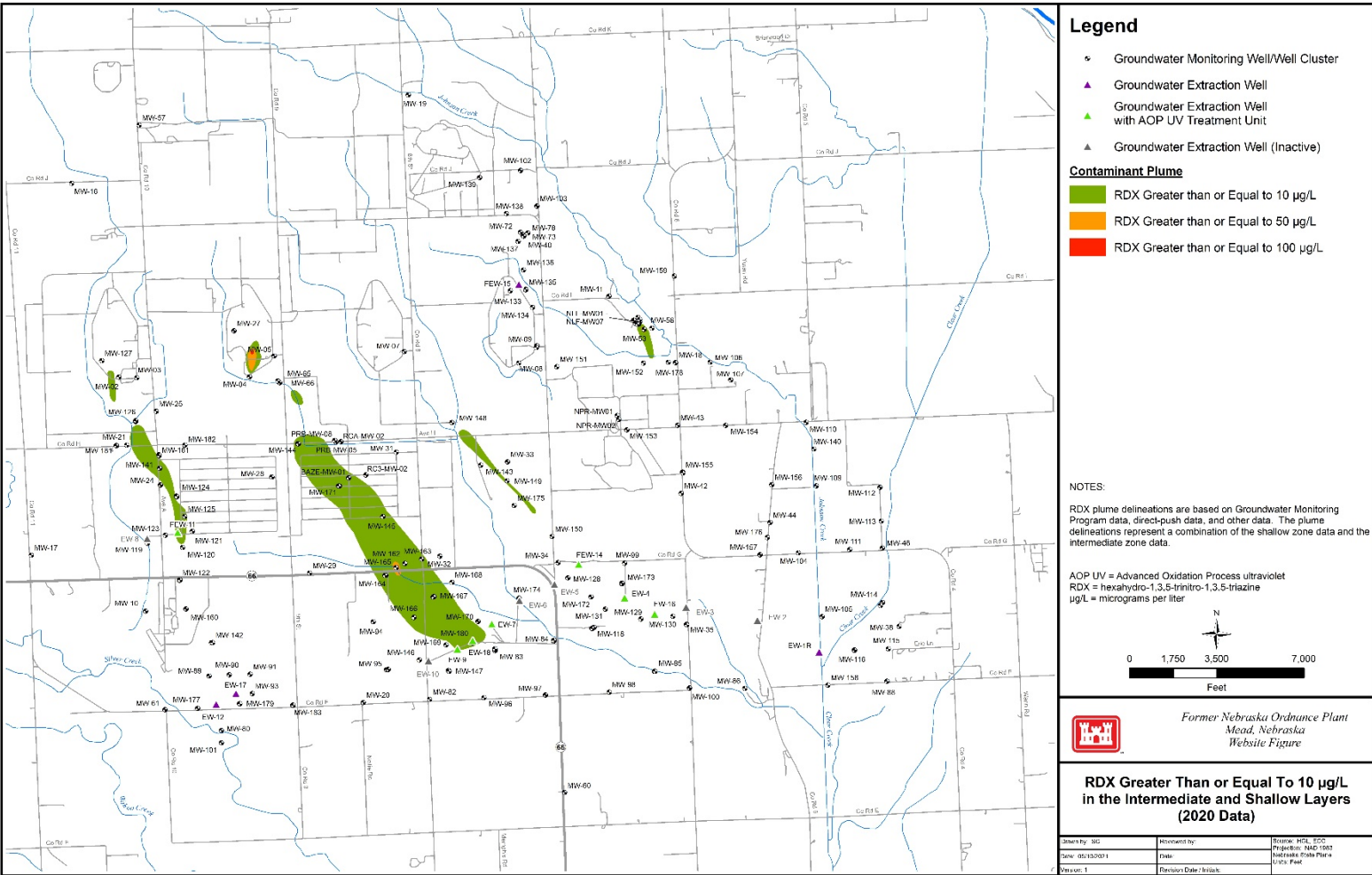
Former Nebraska Ordnance Plant  
 Mead, Nebraska  
 Website Figure

**RDX Greater Than or Equal To 2  $\mu\text{g}/\text{L}$   
 in the Intermediate and Shallow Layers  
 (2020 Data)**

Drawn by: BC	Reviewed by:	Source: HSL EDC
Date: 02/13/2021	File:	Project: NRP-1583
Version: 1	Revision/Date: Billis	Metadata: Data File
		Units: Feet

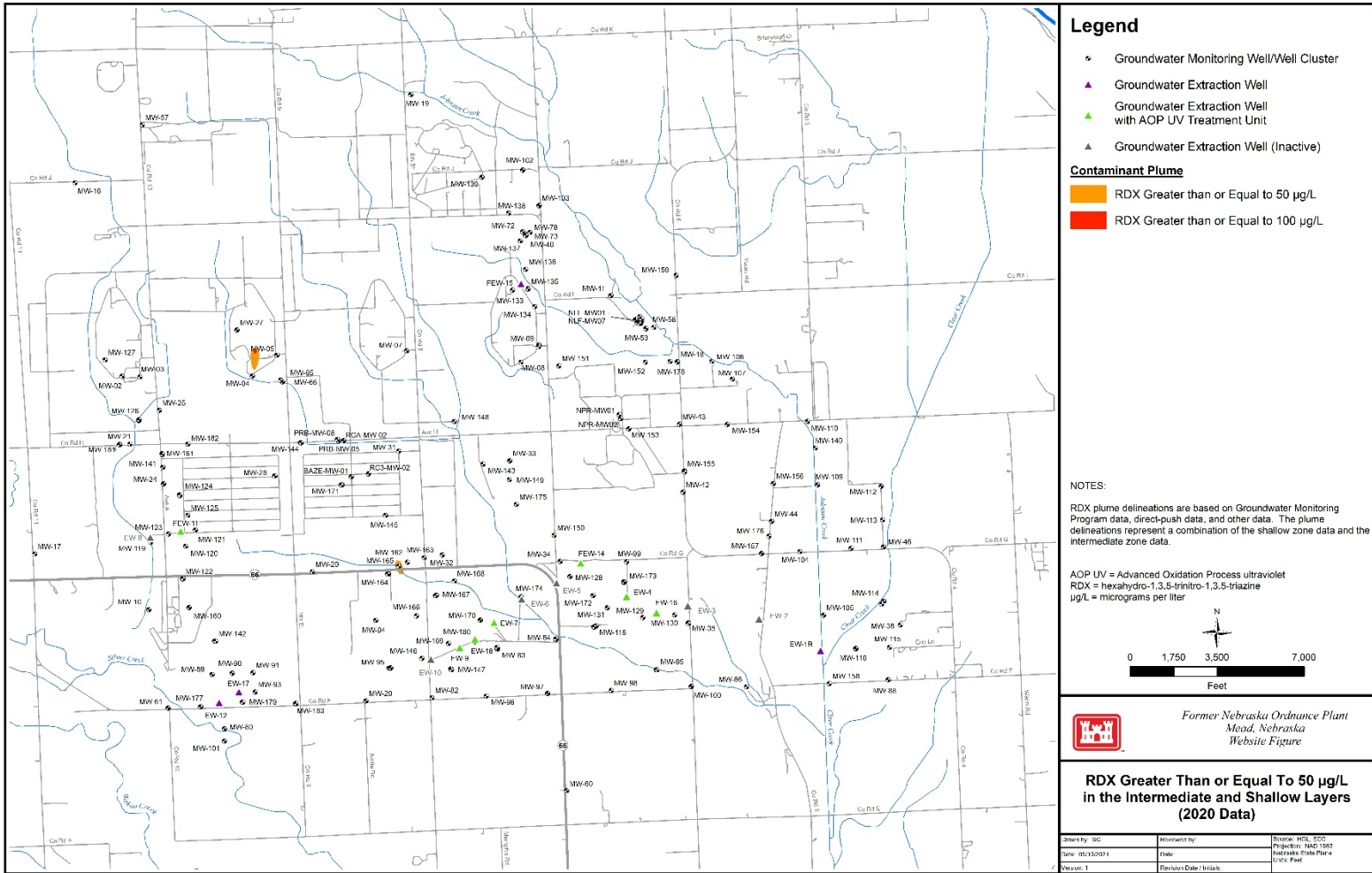
Y:\envs\AR07\_CORP\CORP\_ENGINEERS\KANSAS\_CITY\mead\Ordnance Plant\MapDocs\110781\ppl\_rdx\_2020\09\09\intermediateRDX\_CTE\_2.mxd

# RDX Greater Than or Equal to 10 µg/L



V:\c0260202\_0107\_CORPS\_OF\_ENGINEERS\_KANSAS\_CITY\esri\www\Online\PSR\MapDoc\11070102\11070102\_05\05\www\edit\esri\RDX\_CTE\_10.mxd

# RDX Greater Than or Equal to 50 µg/L



Y:\caw020\_0107\_CORP3\_OF\_ENGINEERS\_KANSAS\_CITY\www\Office\Projects\04062012\09\0000\deliber\RD\_X\_CTE\_50\_130

# RDX Greater Than or Equal to 100 μg/L

