

VICINITY MAP

Jerseyville, IL

Troy, MO

Wright City, MO

Warrenton, MO

Alton, IL--MO

Eureka, MO

St. Louis, MO--IL

Pacific, MO

Millstadt, IL

Union, MO

Smithton, IL

0

10

20

Miles

38°41'N

91°19'W

38°41'N

91°18'W

< 8

8 - 9

9 - 9.5

9.5 - 10

10 - 12

12 - 14

14 - 16

> 16

< 8 ft

8 - 9 ft

9 - 10 ft

10 - 12 ft

River Mile

Sailing Line

BSNP Structure

Levee

Green Passing

Red Passing

Green Crossing

Red Crossing

Green

Red

Junction

Buoy

Green CAN

Red NUN

0

312.5

625

937.5

1,250

2,500

Feet

NOTES:

Horizontal Coordinate System:  
World Geodetic System of 1984 (WGS84), projected to the  
Universal Transverse Mercator (UTM) Zone 15 North.  
Distance units in U.S. Survey Feet

Vertical Datum:  
Soundings are shown in feet and indicated depths  
are referenced to water surface at time of collection.

The information depicted on this map represents the results of a survey  
conducted on the date indicated and can only be considered  
to represent the general condition existing at that time.

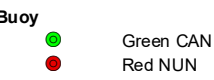
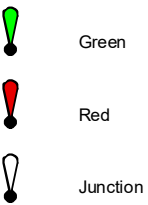
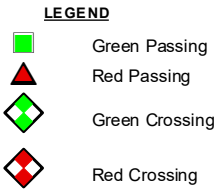
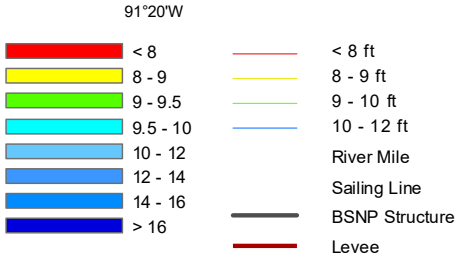
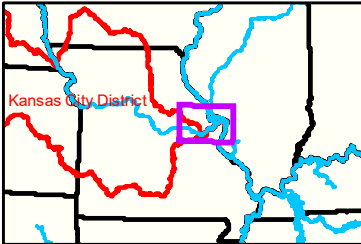
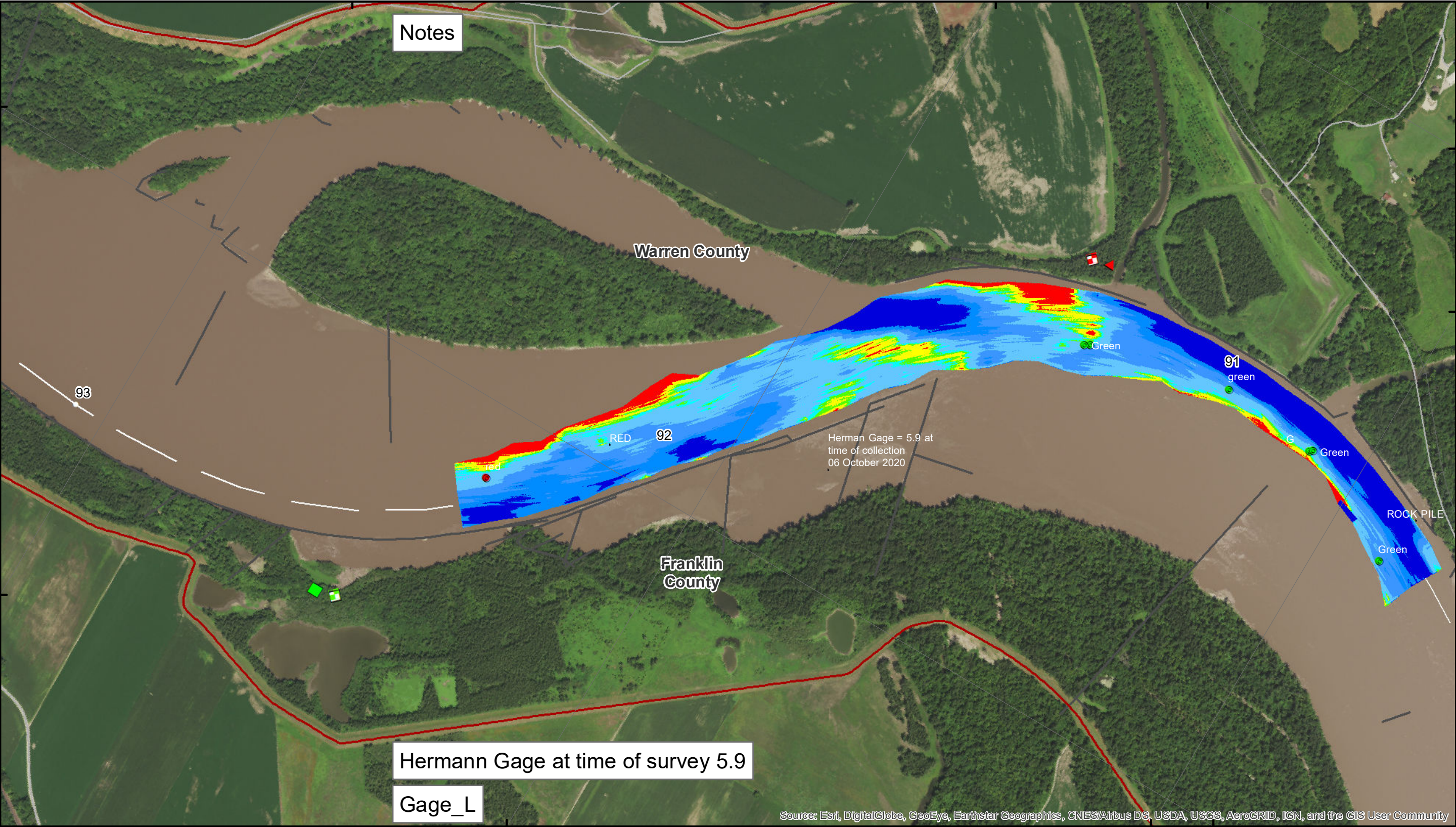
The location of navigation aids are based on and provided by  
the U.S. Coast Guard.

Sheet  
Number  
41 of 46

Depth data liability: The data presented here is the result of data collected by the U.S. Army Corps of Engineers for a specific purpose. It is not intended for use in any other manner. As such, it is not intended for use in any other manner. The data is not intended for use in any other manner. The data is not intended for use in any other manner.

KANSAS CITY DISTRICT MISSOURI RIVER AREA OFFICE			
Submitted By	Reviewed By	Approved By	Checked By
_____	_____	_____	_____
Submitted	Reviewed	Approved	Checked
_____	_____	_____	_____
Submitted	Reviewed	Approved	Checked
_____	_____	_____	_____

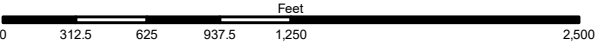
**Survey Information**  
MO\_01\_LMR  
MO\_01\_LMR\_20201006\_CS\_90\_5\_92\_SORT  
06 October 2020



91°19'W 38°41'N



**NOTES:**  
Horizontal Coordinate System:  
World Geodetic System of 1984 (WGS84), projected to the  
Universal Transverse Mercator (UTM) Zone 15 North.  
Distance units in U.S. Survey Feet  
  
Vertical Datum:  
Soundings are shown in feet and indicated depths  
are referenced to water surface at time of collection.  
  
The information depicted on this map represents the results of a survey  
conducted on the date indicated and can only be considered  
to represent the general condition existing at that time.  
  
The location of navigation aids are based on and provided by  
the U.S. Coast Guard.



Depth data liability: The data presented in this map is the result of a survey conducted by the U.S. Army Corps of Engineers. The data is provided for informational purposes only and is not intended for use in navigation or other critical applications. The user assumes all liability for any use of the data. The data is not to be used for navigation or other critical applications. The user assumes all liability for any use of the data.

KANSAS CITY DISTRICT MISSOURI RIVER AREA OFFICE			
Submitted By	Reviewed By	Approved By	Checked By
_____	_____	_____	_____
_____	_____	_____	_____
_____	_____	_____	_____

**Survey Information**  
MO\_01\_LMR  
MO\_01\_LMR\_20201006\_CS\_90\_5\_92\_SORT  
06 October 2020

**Sheet Number**  
42 of 46