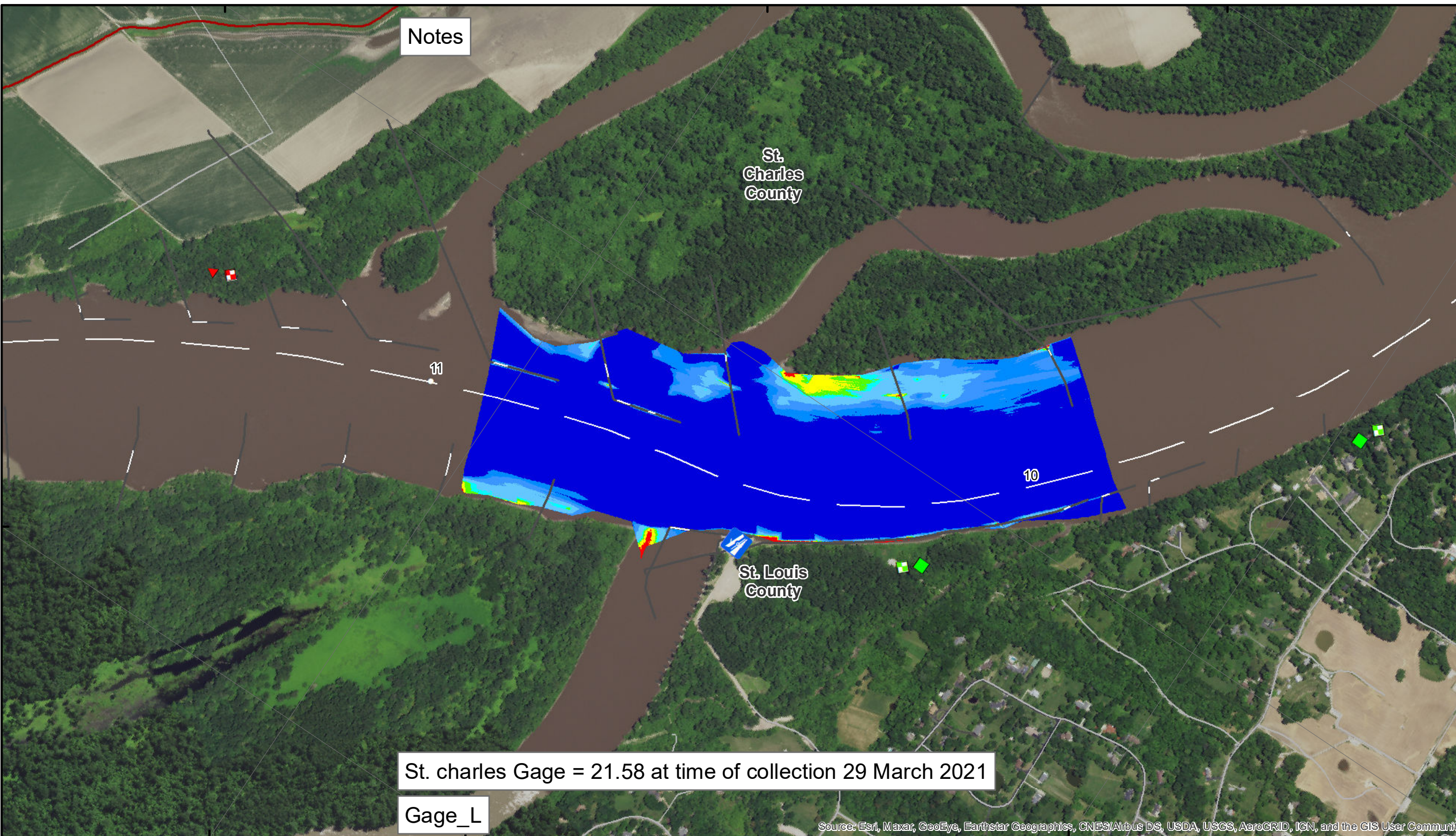


90°16'W

38°52'N

90°15'W



Notes

St. Charles County

St. Louis County

St. charles Gage = 21.58 at time of collection 29 March 2021

Gage_L

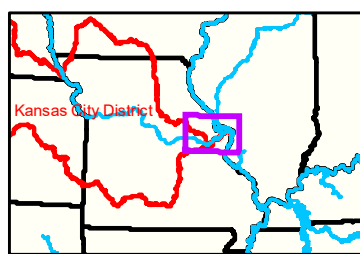
Source: Esri, Maxar, GeoEye, Earthstar Geographics, CNES/Airbus DS, USDA, USGS, AeroGRID, IGN, and the GIS User Community



Disclaimer: The U.S. Army Corps of Engineers provides this information for informational purposes only. It is not intended for navigation. The information is provided as a service to the public and is not guaranteed. The user assumes all responsibility for any use of this information. The U.S. Army Corps of Engineers is not liable for any damages, including consequential damages, resulting from the use of this information. The information is provided as a service to the public and is not guaranteed. The user assumes all responsibility for any use of this information. The U.S. Army Corps of Engineers is not liable for any damages, including consequential damages, resulting from the use of this information.

KANSAS CITY DISTRICT MISSOURI RIVER AREA OFFICE	
Submitted By:	MIRAO
Reviewed By:	MIRAO
Approved By:	MIRAO

Survey Information
 MO_01_LMR
 MO_01_LMR_20210329_CS_9_8_10_8_SORT
 29 March 2021



LEGEND

< 8	< 8 ft	Green Passing	Green	Green CAN
8 - 9	8 - 9 ft	Red Passing	Red	Red NUN
9 - 9.5	9 - 10 ft	Green Crossing	Junction	
9.5 - 10	10 - 12 ft	Red Crossing		
10 - 12	River Mile			
12 - 14	Sailing Line			
14 - 16	BSNP Structure			
> 16	Levee			

Scale: 0 312.5 625 937.5 1,250 2,500 Feet

Vertical Datum: Soundings are shown in feet and indicated depths are referenced to water surface at time of collection.

Horizontal Coordinate System: World Geodetic System of 1984 (WGS84), projected to the Universal Transverse Mercator (UTM) Zone 15 North. Distance units in U.S. Survey Feet.

The information depicted on this map represents the results of a survey conducted on the date indicated and can only be considered to represent the general condition existing at that time.

The location of navigation aids are based on and provided by the U.S. Coast Guard.



Sheet Number
5 of 46