

39°55'N

95°11'W

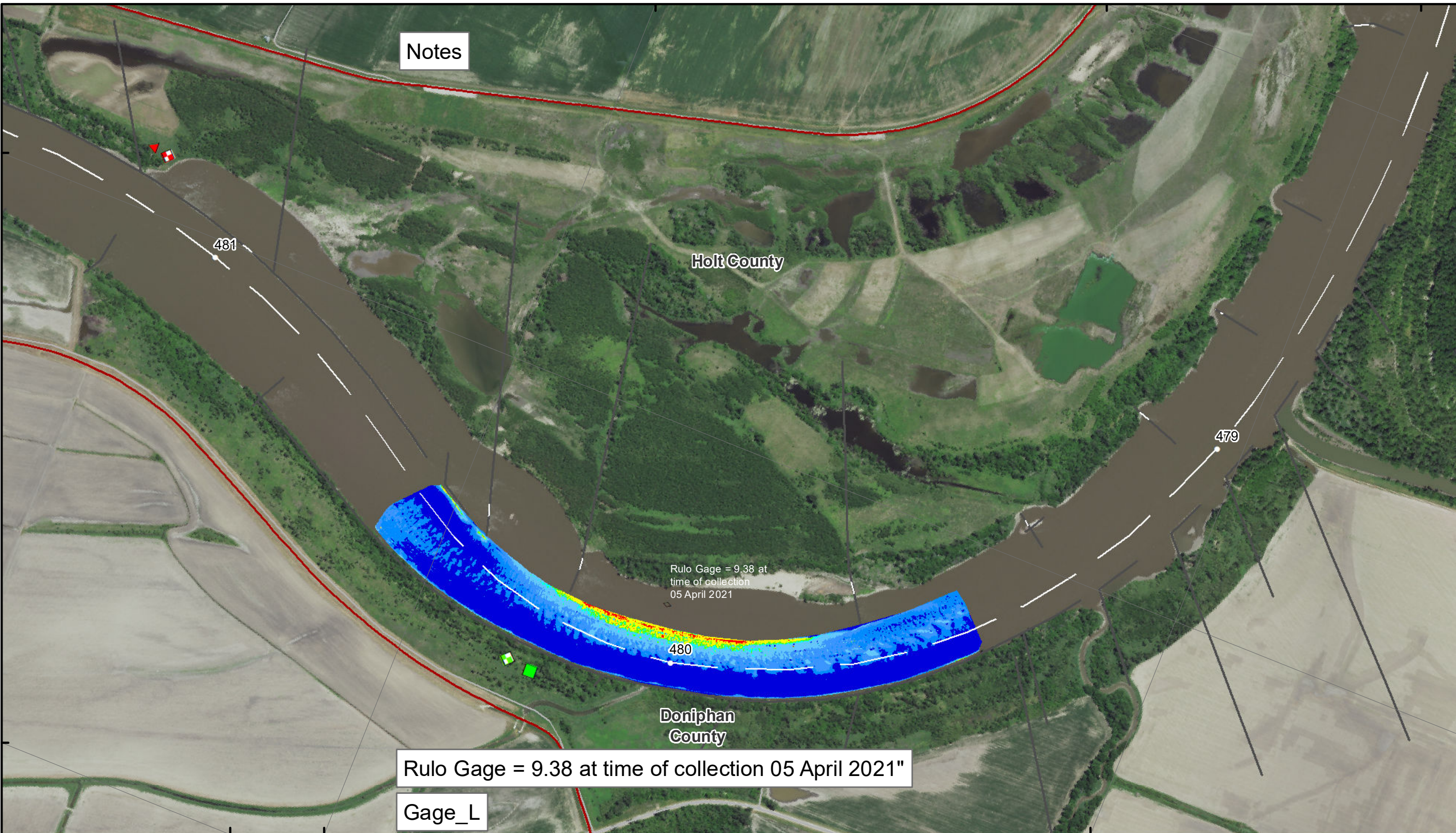
39°53'N

95°12'W

95°11'W

95°13'W

95°12'W



Notes

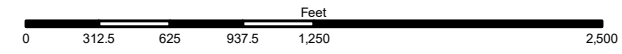
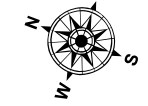
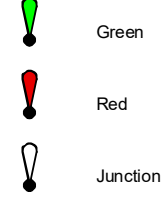
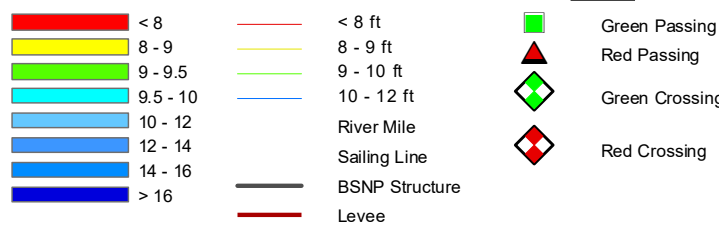
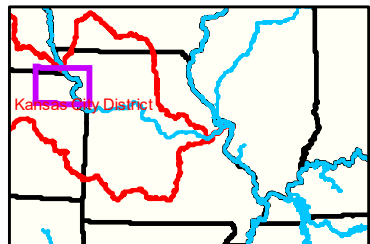
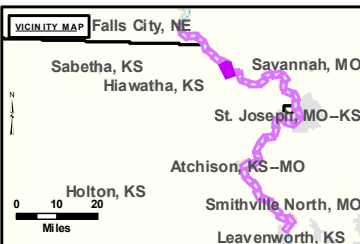
Holt County

Doniphan County

Rulo Gage = 9.38 at time of collection 05 April 2021

Rulo Gage = 9.38 at time of collection 05 April 2021"

Gage_L



NOTES:
 Horizontal Coordinate System:
 World Geodetic System of 1984 (WGS84), projected to the Universal Transverse Mercator (UTM) Zone 15 North. Distance units in U.S. Survey Feet
 Vertical Datum:
 Soundings are shown in feet and indicated depths are referenced to water surface at time of collection.
 The information depicted on this map represents the results of a survey conducted on the date indicated and can only be considered to represent the general condition existing at that time.
 The location of navigation aids are based on and provided by the U.S. Coast Guard.



DISCLAIMER: The U.S. Army Corps of Engineers (USACE) provides this information as a service to the public. It is not intended to be used for any purpose other than that for which it was prepared. The USACE does not warrant, represent, or guarantee the accuracy, reliability, or completeness of the information provided. The USACE is not responsible for any errors or omissions in this information. The USACE is not liable for any damages, including consequential damages, arising from the use of this information. The USACE is not responsible for any actions taken based on this information. The USACE is not responsible for any actions taken based on this information.

KANSAS CITY DISTRICT MISSOURI RIVER AREA OFFICE	
Submitted by:	MIRAO
Reviewed by:	MIRAO
Approved by:	MIRAO

Survey Information
 MO_05_LMR
 MO_05_LMR_20210405_CS_479_5_480_5_SORT
 05 April 2021

Sheet Number
 35 of 43