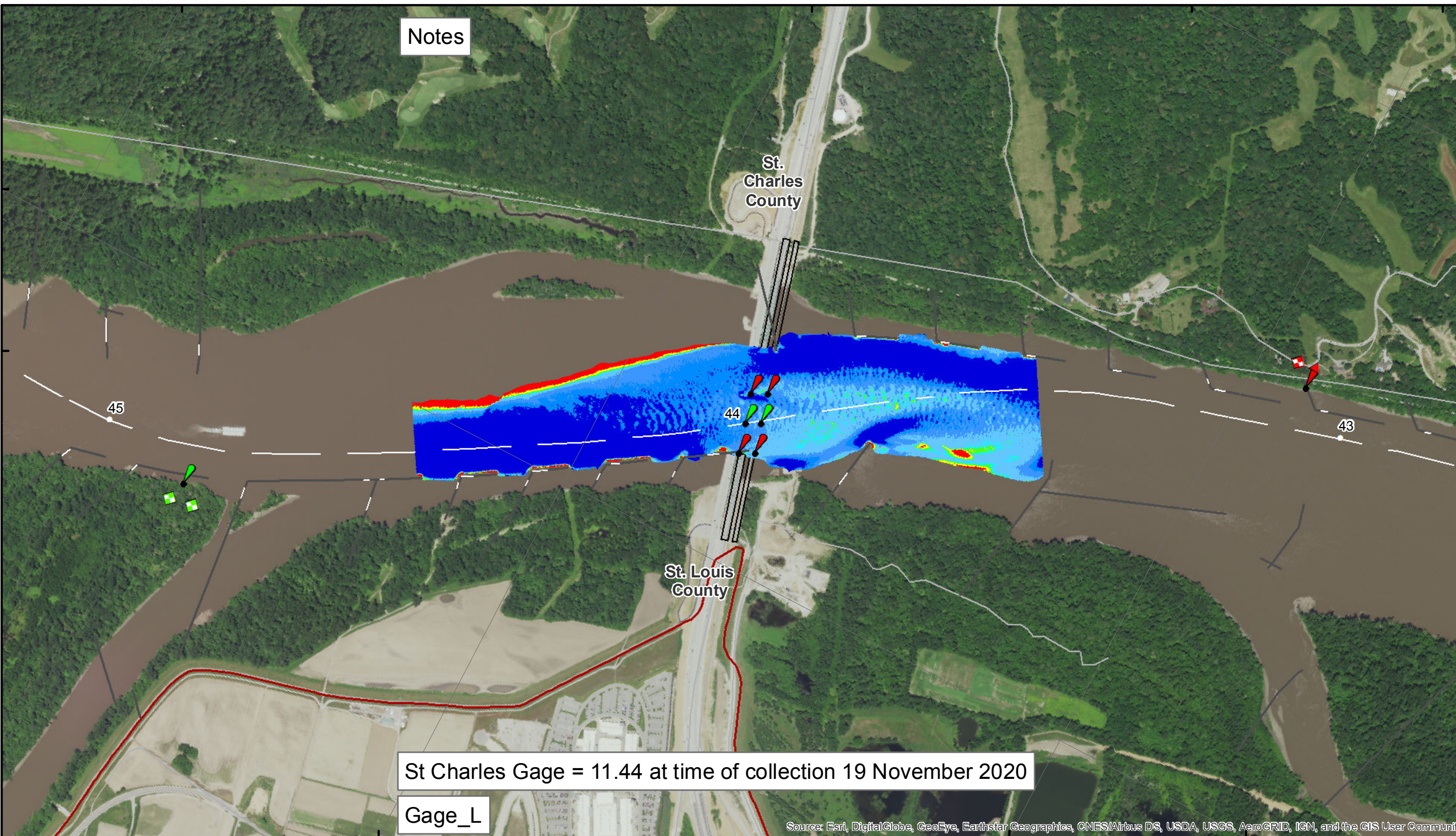


90°41'W

90°40'W

38°41'N

90°39'W



Notes

St. Charles County

St. Louis County

St Charles Gage = 11.44 at time of collection 19 November 2020

Gage_L

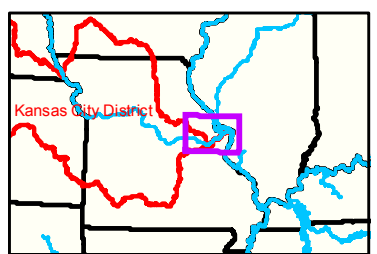
Source: Esri, DigitalGlobe, GeoEye, Earthstar Geographics, CNES/Airbus DS, USDA, USGS, AeroGRID, IGN, and the GIS User Community



DISCLAIMER: The United States Government furnishes this information for a specific purpose and does not warrant its accuracy or completeness. It is provided as is, with all faults. The user assumes all liability for any errors or omissions in the data furnished. This disclaimer applies to all users of the data, whether they are government employees or not. The user agrees to indemnify and hold the United States Government harmless from all claims, damages, and expenses, including reasonable attorneys' fees, arising out of or from the use of the data, whether or not such claims, damages, and expenses are caused in whole or in part by the negligence of the United States Government. This disclaimer applies to all users of the data, whether they are government employees or not. The user agrees to indemnify and hold the United States Government harmless from all claims, damages, and expenses, including reasonable attorneys' fees, arising out of or from the use of the data, whether or not such claims, damages, and expenses are caused in whole or in part by the negligence of the United States Government.

KANSAS CITY DISTRICT MISSOURI RIVER AREA OFFICE	
Surveyed By:	MIRAO
Reviewed By:	MIRAO
Checked By:	MIRAO
Approved:	

Survey Information
MO_01_LMR
MO_01_LMRX_20201119_CS_43_5_44_5_SORT
19 November 2020

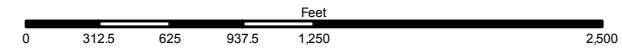


LEGEND

	< 8		< 8 ft		Green Passing
	8 - 9		8 - 9 ft		Red Passing
	9 - 9.5		9 - 10 ft		Green Crossing
	9.5 - 10		10 - 12 ft		Red Crossing
	10 - 12		River Mile		
	12 - 14		Sailing Line		
	14 - 16		BSNP Structure		
	> 16		Levee		

Buoy

	Green		Green CAN
	Red		Red NUN
	Junction		



NOTES:
Horizontal Coordinate System:
World Geodetic System of 1984 (WGS84), projected to the Universal Transverse Mercator (UTM) Zone 15 North.
Distance units in U.S. Survey Feet
Vertical Datum:
Soundings are shown in feet and indicated depths are referenced to water surface at time of collection.
The information depicted on this map represents the results of a survey conducted on the date indicated and can only be considered to represent the general condition existing at that time.
The location of navigation aids are based on and provided by the U.S. Coast Guard.

Sheet Number
20 of 46