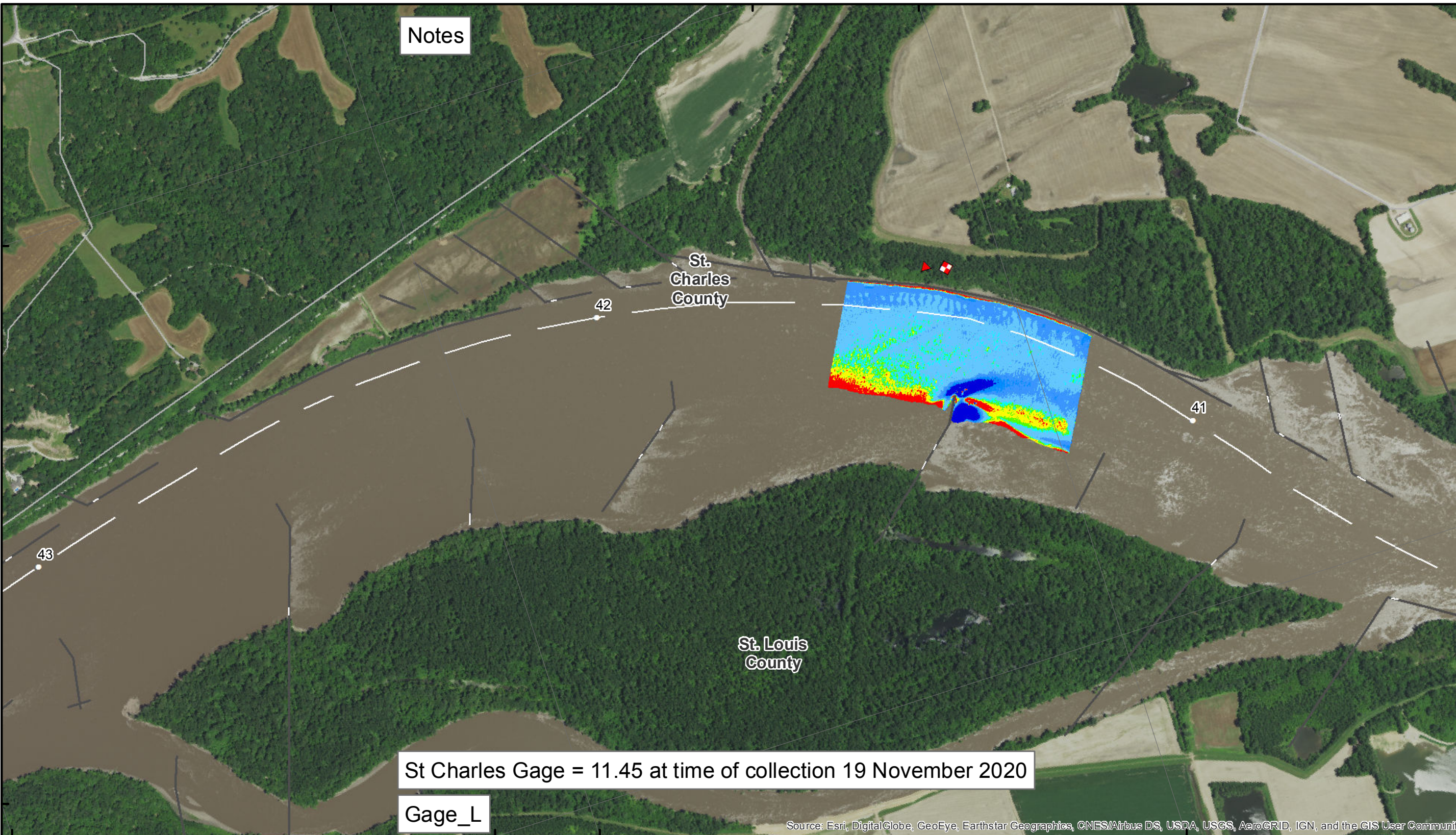
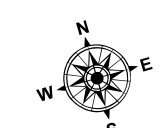
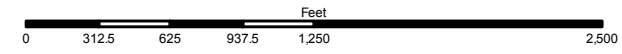
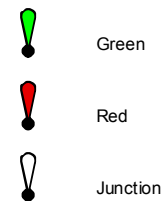
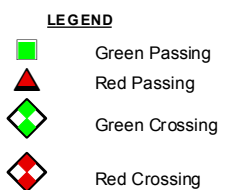
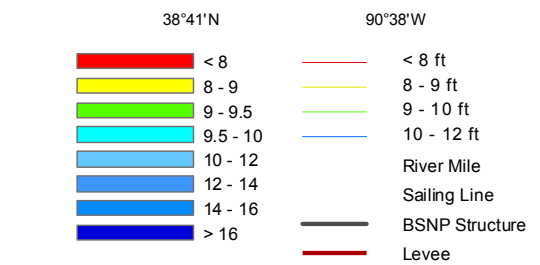
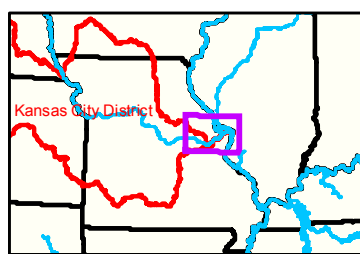


90°38'W 38°41'N 90°37'W



38°41'N 90°39'W

38°41'N



NOTES:
 Horizontal Coordinate System:
 World Geodetic System of 1984 (WGS84), projected to the
 Universal Transverse Mercator (UTM) Zone 15 North.
 Distance units in U.S. Survey Feet

Vertical Datum:
 Soundings are shown in feet and indicated depths
 are referenced to water surface at time of collection.

The information depicted on this map represents the results of a survey
 conducted on the date indicated and can only be considered
 to represent the general condition existing at that time.

The location of navigation aids are based on and provided by
 the U.S. Coast Guard.



DISCLAIMER: The United States Government is authorized to reproduce and distribute reprints for government purposes not withstanding any copyright notation that may appear hereon. The United States Government does not warrant the accuracy or completeness of the information furnished herein. The United States Government makes no warranty, express or implied, with respect to the use of the information furnished herein for purposes not intended by the United States Government. The United States Government is not liable for any damages, including those resulting from the use of the information furnished herein, or from any delay in the delivery of the information furnished herein, or from any other consequences of the use of the information furnished herein. The United States Government is not liable for any damages, including those resulting from the use of the information furnished herein, or from any delay in the delivery of the information furnished herein, or from any other consequences of the use of the information furnished herein.

KANSAS CITY DISTRICT MISSOURI RIVER AREA OFFICE	
Submitted By:	MIRAO
Reviewed By:	MIRAO
Approved By:	MIRAO

Survey Information
 MO_01_LMR
 MO_01_LMRX_20201119_CS_41_2_41_6_SORT
 19 November 2020

**Sheet
 Number
 19 of 46**