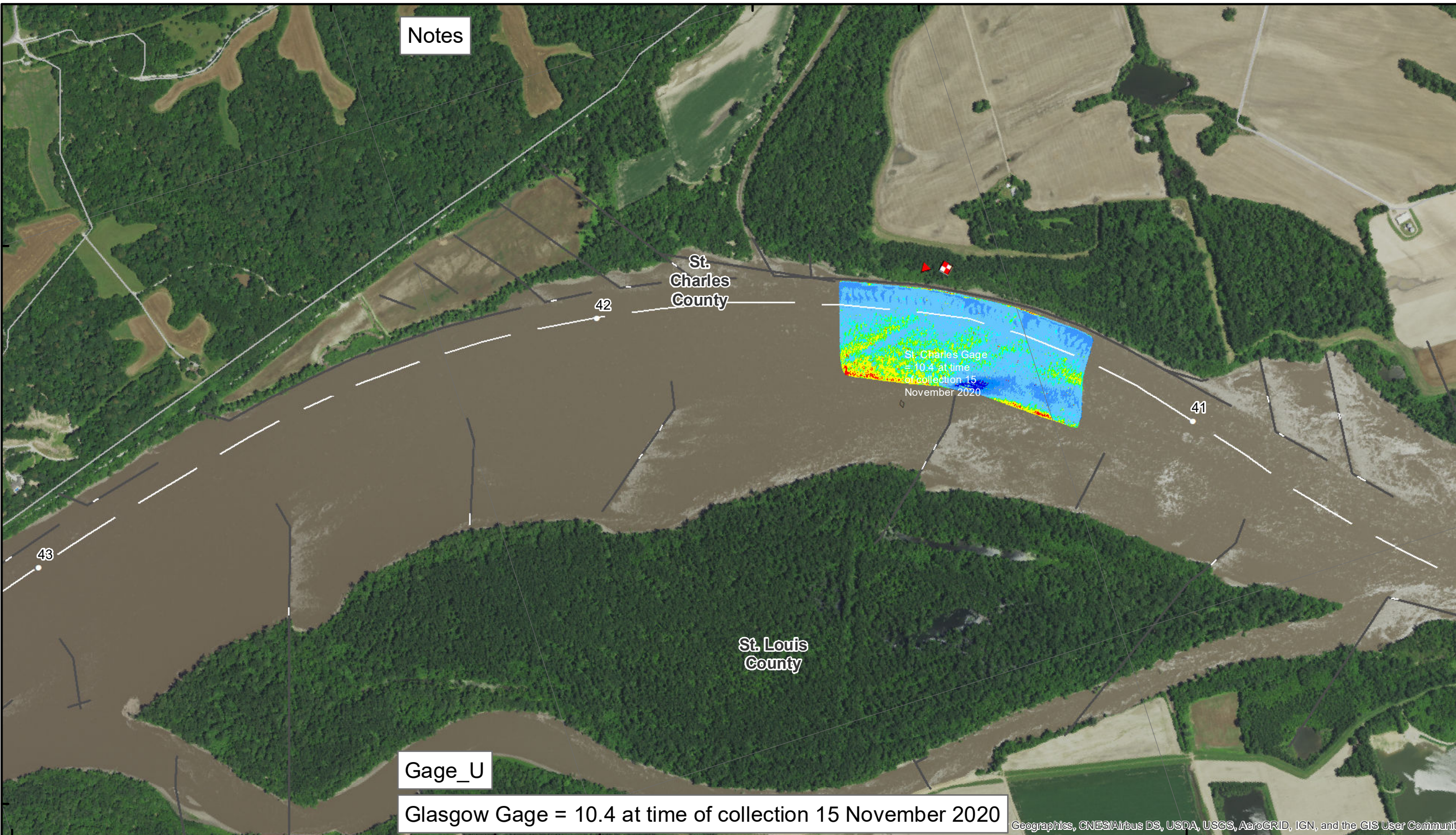


90°38'W 38°41'N 90°37'W



Notes

Gage_U

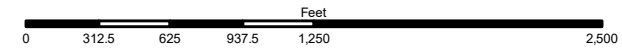
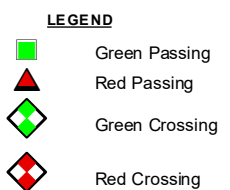
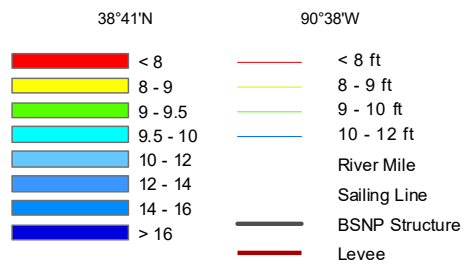
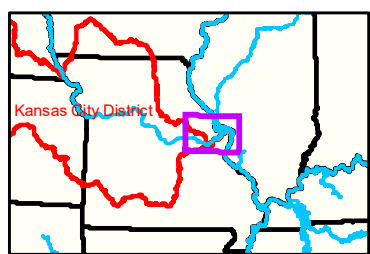
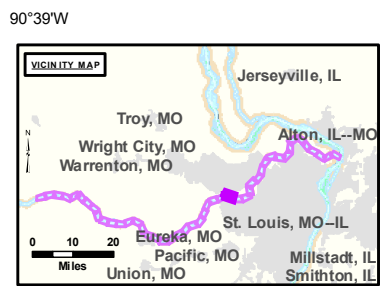
Glasgow Gage = 10.4 at time of collection 15 November 2020

St. Charles Gage = 10.4 at time of collection 15 November 2020

Geographics, CNES/Airbus DS, USDA, USGS, AeroGRID, IGN, and the GIS User Community

38°41'N 90°39'W

38°41'N



NOTES:
 Horizontal Coordinate System:
 World Geodetic System of 1984 (WGS84), projected to the Universal Transverse Mercator (UTM) Zone 15 North. Distance units in U.S. Survey Feet
 Vertical Datum:
 Soundings are shown in feet and indicated depths are referenced to water surface at time of collection.
 The information depicted on this map represents the results of a survey conducted on the date indicated and can only be considered to represent the general condition existing at that time.
 The location of navigation aids are based on and provided by the U.S. Coast Guard.



DISCLAIMER: The U.S. Army Corps of Engineers (USACE) provides this information as a service to the public. It is not intended to be used for any purpose other than that for which it was intended. The USACE makes no warranty, express or implied, regarding the accuracy, reliability, or completeness of the information. The USACE is not responsible for any errors or omissions in this information. The USACE is not liable for any damages, including consequential damages, arising from the use of this information. The USACE is not responsible for any actions taken based on this information. The USACE is not responsible for any actions taken based on this information.

KANSAS CITY DISTRICT MISSOURI RIVER AREA OFFICE	
Submitted By:	MRA/O
Reviewed By:	MRA/O
Approved By:	MRA/O

Survey Information
 MO_01_LMR
 MO_01_LMR_20201116_CS_41_2_41_6_SORT
 16 November 2020

Sheet Number
 19 of 46