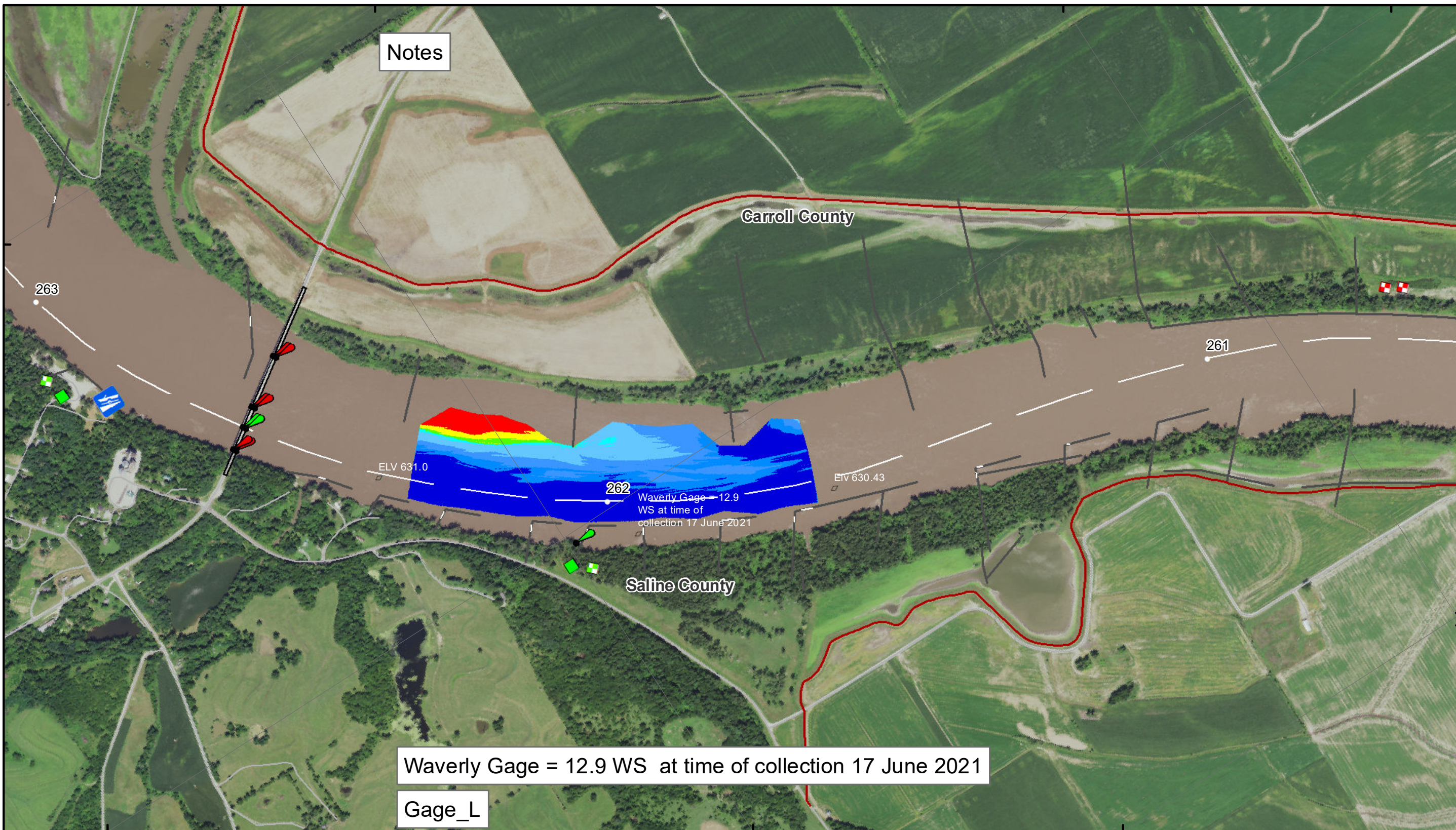


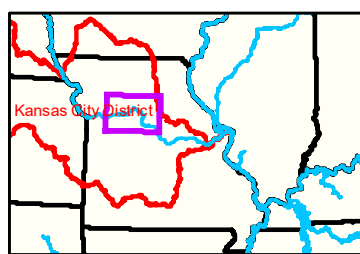
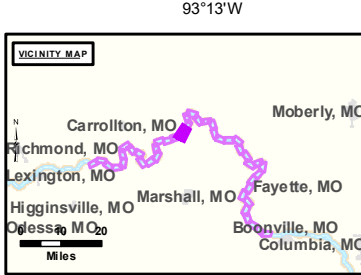
39°20'N 93°14'W 39°21'N 93°13'W



Notes

Waverly Gage = 12.9 WS at time of collection 17 June 2021

Gage\_L



**LEGEND**

--	--	--

**Scale:** 0 312.5 625 937.5 1250 2500 Feet

**Compass Rose:** N, S, E, W

**NOTES:**  
 Horizontal Coordinate System: World Geodetic System of 1984 (WGS84), projected to the Universal Transverse Mercator (UTM) Zone 15 North. Distances in U.S. Survey Feet  
 Vertical Datum: Soundings are shown in feet and indicated depths are referenced to water surface at time of collection.  
 The information depicted on this map represents the results of a survey conducted on the date indicated and can only be considered to represent the general condition existing at that time.  
 The location of navigation aids are based on and provided by the U.S. Coast Guard.



**DISCLAIMER:** The United States Government furnishes this information for a specific purpose and does not warrant its accuracy or completeness. The user assumes all responsibility for the use of the information. The United States Government makes no warranty, express or implied, of the accuracy or completeness of the information furnished. The United States Government is not liable for any damages, including consequential damages, arising from the use of the information. The user shall indemnify and hold the United States Government harmless from any and all claims, damages, and expenses, including reasonable attorneys' fees, that may be asserted against or incurred by the United States Government or its employees, agents, or contractors, in connection with the use of the information. This disclaimer shall not be construed to limit the liability of the United States Government for negligence or willful or wanton misconduct.

KANSAS CITY DISTRICT MISSOURI RIVER AREA OFFICE	
Surveyed By: NR, A/O	Checked By: NR, A/O
Drawn By: NR, A/O	Approved By: NR, A/O

**Survey Information**  
 MO\_03\_LMR  
 MO\_03\_LMR\_20210617\_CS\_261\_7\_262\_3\_SORT  
 17 June 2021

**Sheet Number**  
 26 of 42