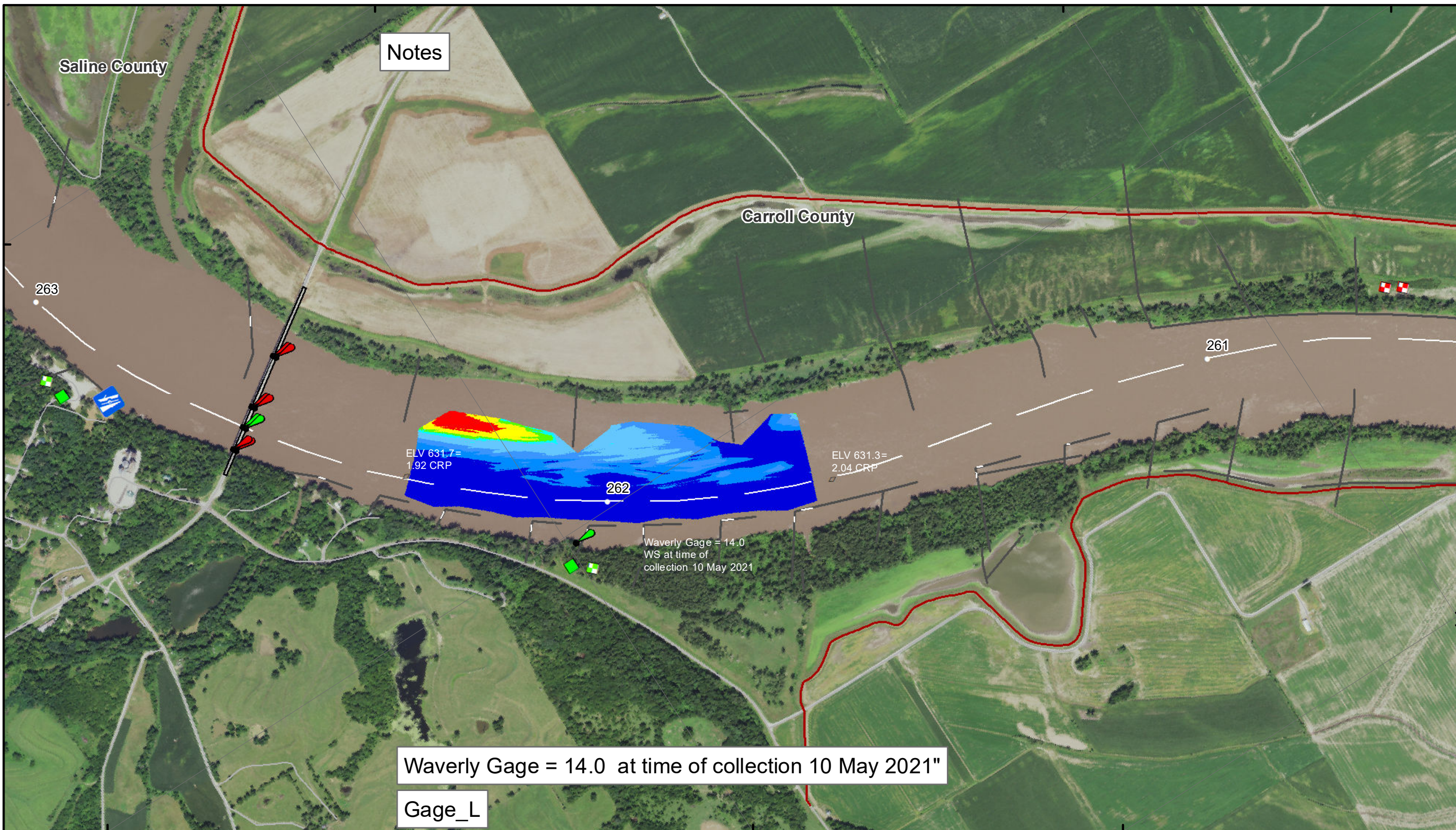


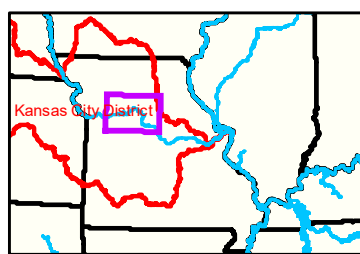
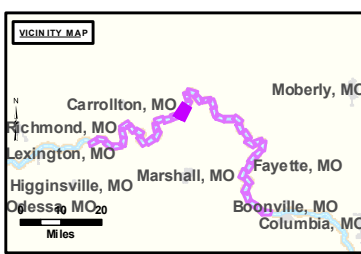
39°20'N 93°14'W 39°21'N 93°13'W



Notes

Waverly Gage = 14.0 at time of collection 10 May 2021"

Gage_L



LEGEND

			Green Passing		Green		AIS Green CAN
			Green Crossing		Red		AIS Red NUN
			Red Crossing		Junction		Green CAN
			Levee				Red NUN

Buoy

	AIS Green CAN
	AIS Red NUN
	Green CAN
	Red NUN

Scale: 0 312.5 625 937.5 1,250 2,500 Feet

NOTES:
 Horizontal Coordinate System:
 World Geodetic System of 1984 (WGS84), projected to the Universal Transverse Mercator (UTM) Zone 15 North. Distance units in U.S. Survey Feet

Vertical Datum:
 Soundings are shown in feet and indicated depths are referenced to water surface at time of collection.

The information depicted on this map represents the results of a survey conducted on the date indicated and can only be considered to represent the general condition existing at that time.

The location of navigation aids are based on and provided by the U.S. Coast Guard.



DISCLAIMER: The U.S. Army Corps of Engineers (USACE) provides this information as a service to the public. It is not intended to be used for any purpose other than that for which it was intended. The USACE makes no warranty, express or implied, regarding the accuracy, reliability, or completeness of the information provided. The USACE is not responsible for any errors or omissions in this information. The USACE is not liable for any damages, including consequential damages, arising from the use of this information. The USACE is not responsible for any actions taken based on this information. The USACE is not responsible for any actions taken based on this information.

KANSAS CITY DISTRICT MISSOURI RIVER AREA OFFICE	
Submitted By:	MRAO
Reviewed By:	MRAO
Checked By:	MRAO

Survey Information

MO_03_LMR
 MO_03_LMR_20210510_CS_261_7_262_3_SORT
 10 May 2021

Sheet Number
 26 of 42