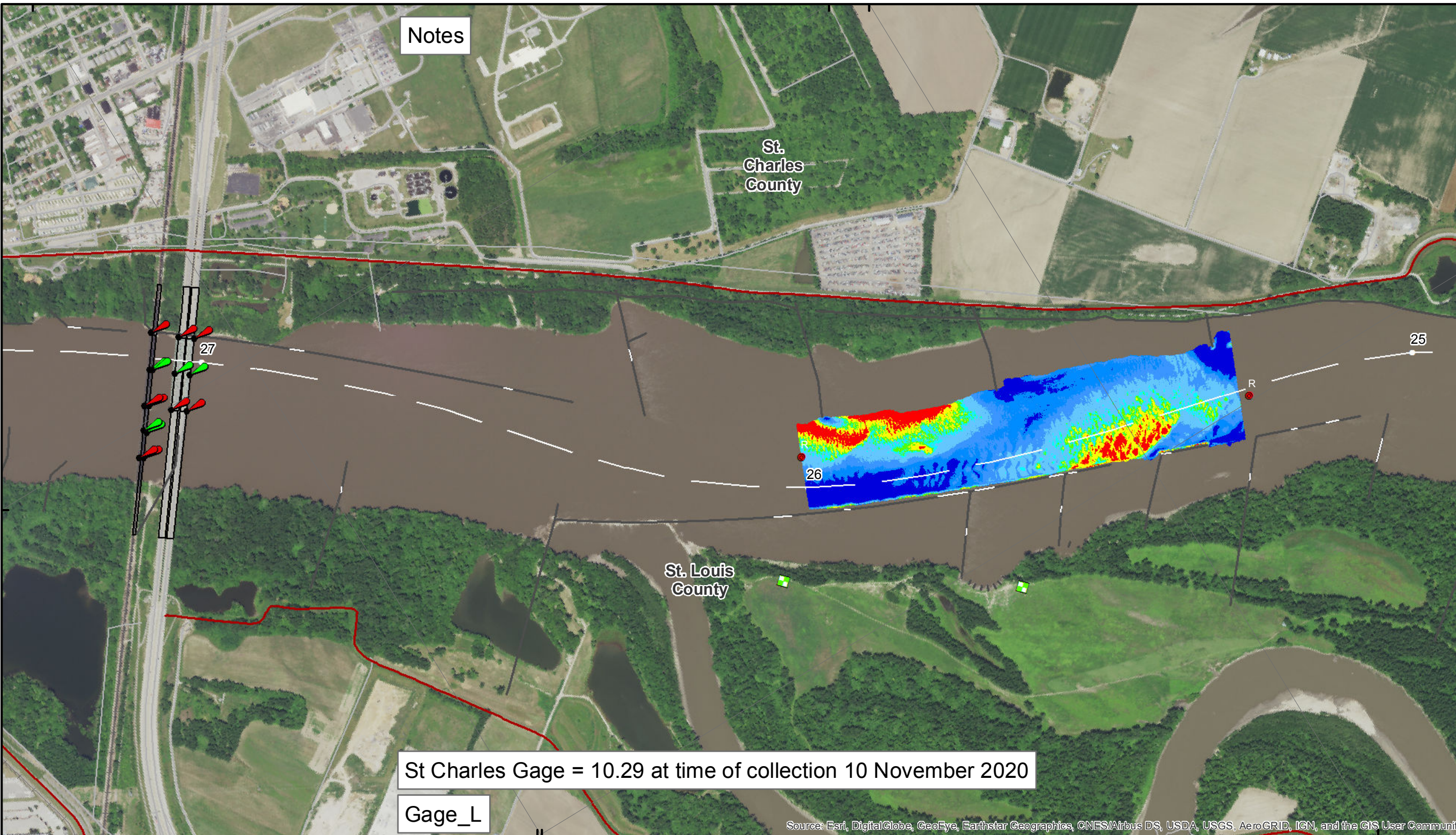


38°48'N

90°28'W 38°49'N



Notes

St. Charles County

St. Louis County

St Charles Gage = 10.29 at time of collection 10 November 2020

Gage\_L

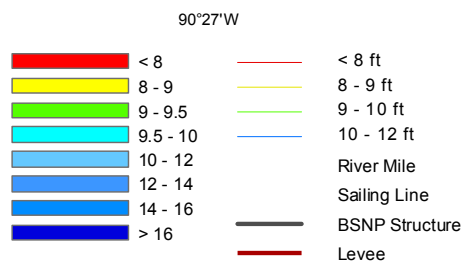
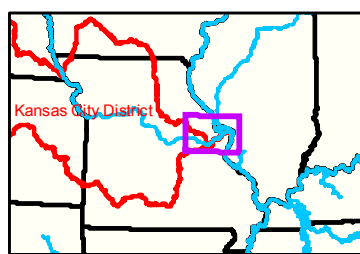
Source: Esri, DigitalGlobe, GeoEye, Earthstar Geographics, CNES/Airbus DS, USDA, USGS, AeroGRID, IGN, and the GIS User Community



**DISCLAIMER:** The data represents the results of a survey conducted on the Missouri River for a specific date and time. The data is not intended to be used for any other purpose. The user of this data is responsible for its proper use and interpretation. The data is provided as a service to the user and is not a guarantee of accuracy. The user should verify the data for their specific needs. The data is provided as a service to the user and is not a guarantee of accuracy. The user should verify the data for their specific needs.

KANSAS CITY DISTRICT MISSOURI RIVER AREA OFFICE	
Submitted By:	MRAO
Reviewed By:	MRAO
Checked By:	MRAO
Approved:	

**Survey Information**  
MO\_01\_LMR  
MO\_01\_LMRX\_20201110\_CS\_25\_3\_26\_0\_SORT  
10 November 2020

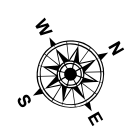
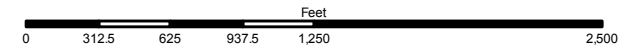


**LEGEND**

- Green Passing
- Red Passing
- Green Crossing
- Red Crossing

**Buoy**

- Green
- Red
- Junction
- Green CAN
- Red NUN



**NOTES:**  
Horizontal Coordinate System: World Geodetic System of 1984 (WGS84), projected to the Universal Transverse Mercator (UTM) Zone 15 North. Distance units in U.S. Survey Feet.  
Vertical Datum: Soundings are shown in feet and indicated depths are referenced to water surface at time of collection.  
The information depicted on this map represents the results of a survey conducted on the date indicated and can only be considered to represent the general condition existing at that time.  
The location of navigation aids are based on and provided by the U.S. Coast Guard.

**Sheet Number 12 of 46**