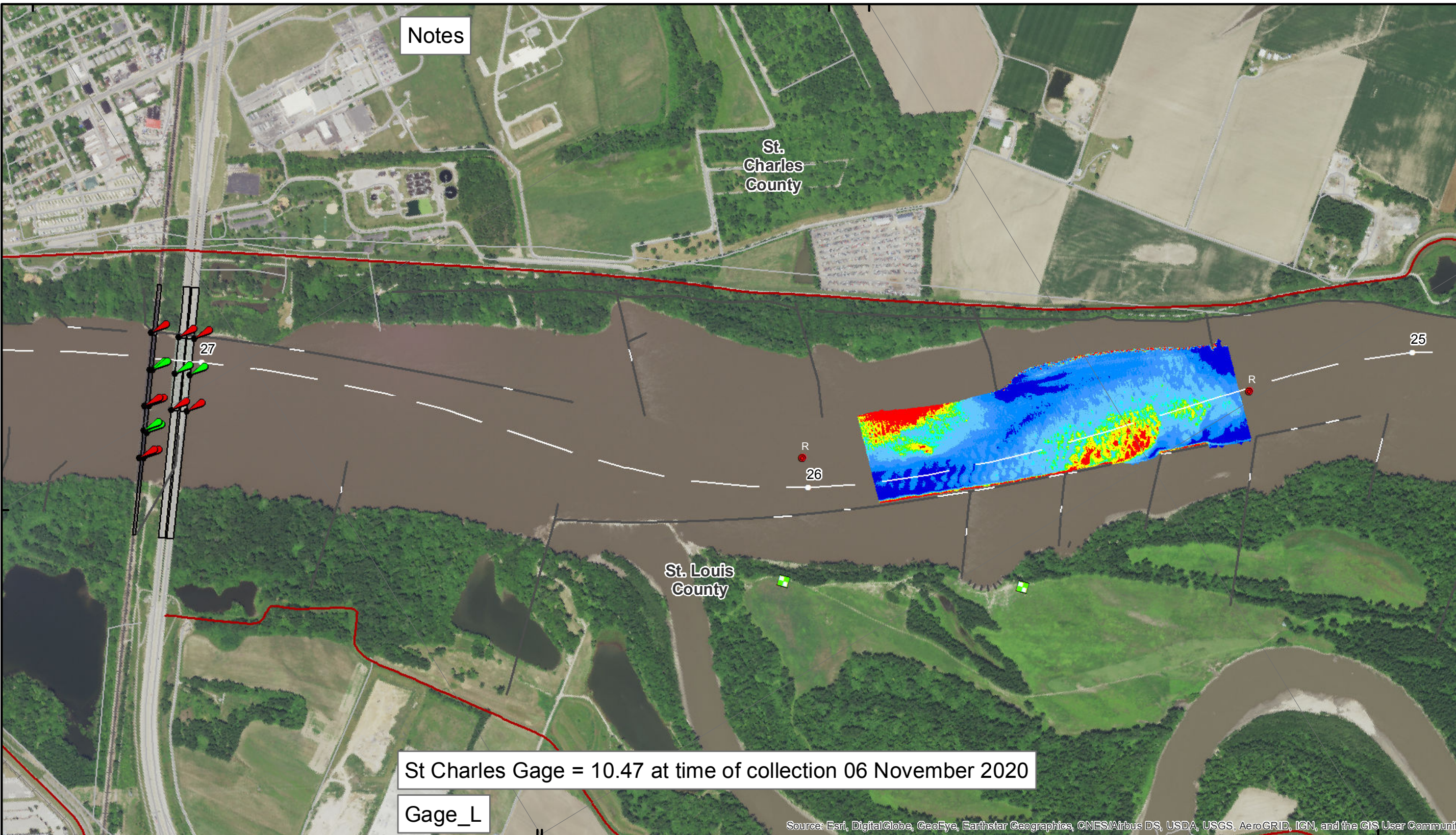


38°48'N

90°28'W 38°49'N



Notes

St. Charles County

St. Louis County

St Charles Gage = 10.47 at time of collection 06 November 2020

Gage_L

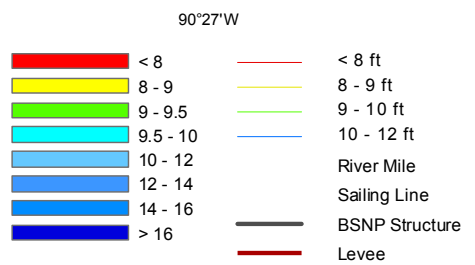
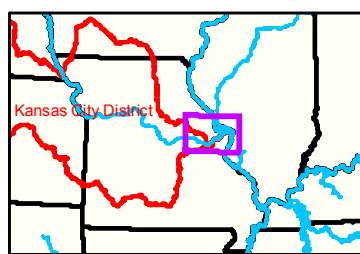
Source: Esri, DigitalGlobe, GeoEye, Earthstar Geographics, CNES/Airbus DS, USDA, USGS, AeroGRID, IGN, and the GIS User Community



DISCLAIMER: The data represents the results of a survey conducted by the U.S. Army Corps of Engineers. The data is provided for informational purposes only and is not intended for use in any legal proceeding. The data is not a warranty, representation, or endorsement of any third party or its products. The data is not to be used for any purpose other than that for which it was collected. The data is not to be used for any purpose other than that for which it was collected. The data is not to be used for any purpose other than that for which it was collected.

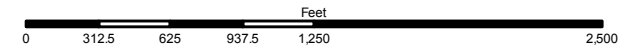
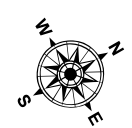
KANSAS CITY DISTRICT MISSOURI RIVER AREA OFFICE	
Submitted By:	MRAO
Reviewed By:	MRAO
Checked By:	MRAO
Approved:	

Survey Information
MO_01_LMR
MO_01_LMRX_20201106_CS_25_3_25_9_SORT
06 November 2020



- LEGEND**
- Green Passing
 - Red Passing
 - Green Crossing
 - Red Crossing

- Buoy**
- Green
 - Red
 - Junction
 - Green CAN
 - Red NUN



NOTES:
Horizontal Coordinate System: World Geodetic System of 1984 (WGS84), projected to the Universal Transverse Mercator (UTM) Zone 15 North. Distance units in U.S. Survey Feet.
Vertical Datum: Soundings are shown in feet and indicated depths are referenced to water surface at time of collection.
The information depicted on this map represents the results of a survey conducted on the date indicated and can only be considered to represent the general condition existing at that time.
The location of navigation aids are based on and provided by the U.S. Coast Guard.

Sheet Number
12 of 46