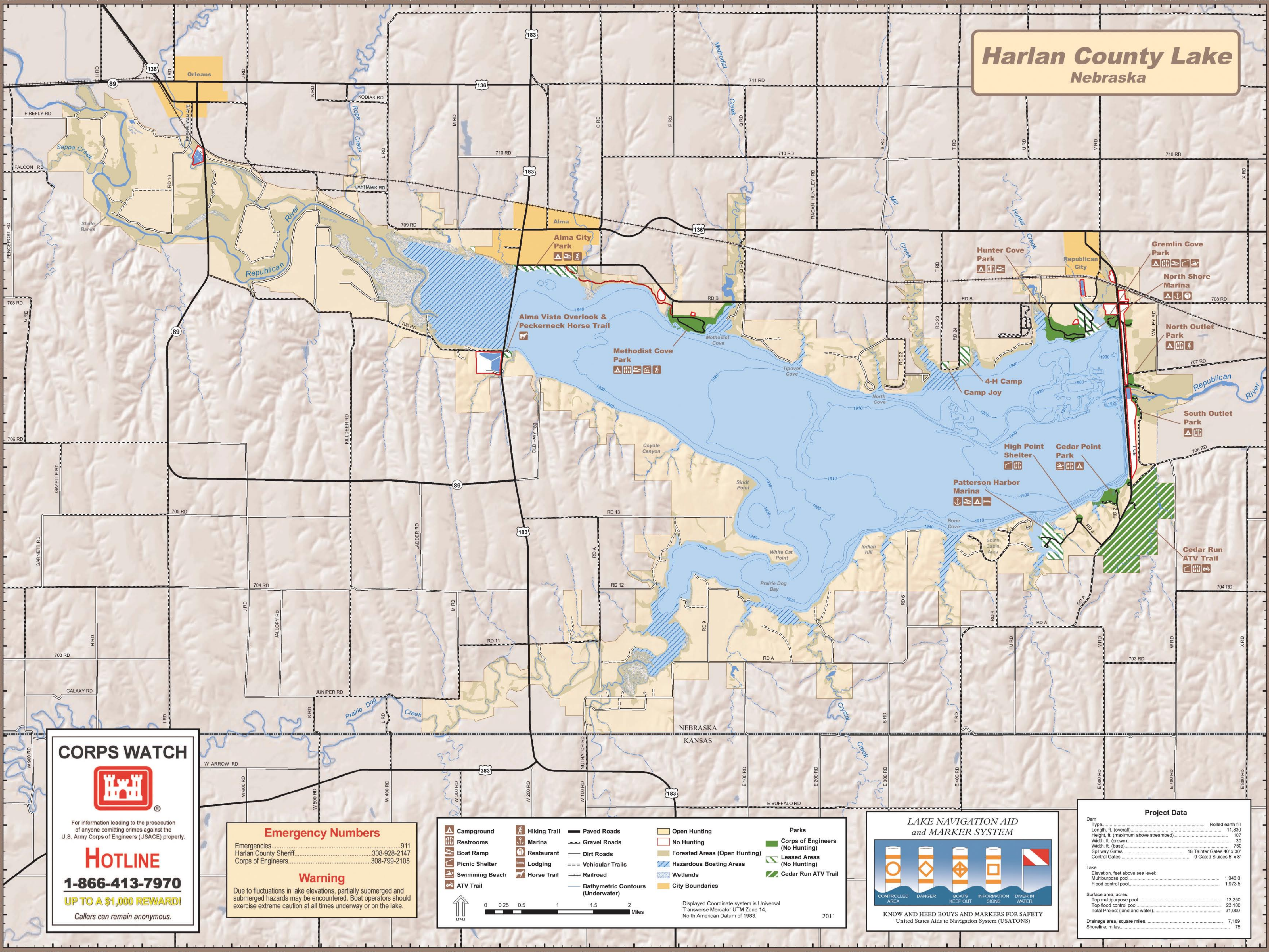


# Harlan County Lake Nebraska



**CORPS WATCH**

For information leading to the prosecution of anyone committing crimes against the U.S. Army Corps of Engineers (USACE) property.

**HOTLINE**  
**1-866-413-7970**  
**UP TO A \$1,000 REWARD!**  
Callers can remain anonymous.

**Emergency Numbers**

Emergencies.....911  
Harlan County Sheriff.....308-928-2147  
Corps of Engineers.....308-799-2105

**Warning**

Due to fluctuations in lake elevations, partially submerged and submerged hazards may be encountered. Boat operators should exercise extreme caution at all times underway or on the lake.

Campground	Hiking Trail	Paved Roads	Open Hunting	Parks
Restrooms	Marina	Gravel Roads	No Hunting	Corps of Engineers (No Hunting)
Boat Ramp	Restaurant	Dirt Roads	Forested Areas (Open Hunting)	Leased Areas (No Hunting)
Picnic Shelter	Lodging	Vehicular Trails	Hazardous Boating Areas	Cedar Run ATV Trail
Swimming Beach	Horse Trail	Railroad	Wetlands	
ATV Trail	Bathymetric Contours (Underwater)	City Boundaries		

0 0.25 0.5 1 1.5 2 Miles

Displayed Coordinate system is Universal Transverse Mercator UTM Zone 14, North American Datum of 1983.

2011

**LAKE NAVIGATION AID and MARKER SYSTEM**

**KNOW AND HEED BOUYS AND MARKERS FOR SAFETY**  
United States Aids to Navigation System (USATONS)

**Project Data**

Dam	Type	Rollled earth fill
	Length, ft. (overall)	11,830
	Height, ft. (maximum above streambed)	107
	Width, ft. (crown)	30
	Width, ft. (base)	750
	Spillway Gates	18 Tainter Gates 40' x 30'
	Control Gates	9 Gated Sluices 5' x 8'
Lake	Elevation, feet above sea level:	
	Multipurpose pool	1,946.0
	Flood control pool	1,973.5
Surface area, acres:		
	Top multipurpose pool	13,250
	Top flood control pool	23,100
	Total Project (land and water)	31,000
Drainage area, square miles		7,169
Shoreline, miles		75