

Smithville Lake



Missouri

PARK AREAS	FACILITIES																			
	Picnic Area	Boat Ramp	Marina	Sailboat Facilities	Swimming	Campgrounds	Trails	Ball Fields	Electrical Hookups	Swage Dump	Swage Hookup	Water Supply	Showers	Restrooms	Laundry	Golf Course	Trap Range	Fishing Dock	Courtesy Dock	
Crows Creek Park*	•	•	•	•	•	•	•	•	•	•	•	•	•	•	•	•	•	•	•	•
Little Platte Park*	•	•	•	•	•	•	•	•	•	•	•	•	•	•	•	•	•	•	•	•
Perkins Park	•	•	•	•	•	•	•	•	•	•	•	•	•	•	•	•	•	•	•	•
Smith's Fork Park	•	•	•	•	•	•	•	•	•	•	•	•	•	•	•	•	•	•	•	•
Litton Visitor Center	•	•	•	•	•	•	•	•	•	•	•	•	•	•	•	•	•	•	•	•
Camp Branch Marina*	•	•	•	•	•	•	•	•	•	•	•	•	•	•	•	•	•	•	•	•
Camp Branch Camp Ground	•	•	•	•	•	•	•	•	•	•	•	•	•	•	•	•	•	•	•	•
Kelsey Short Group Camp	•	•	•	•	•	•	•	•	•	•	•	•	•	•	•	•	•	•	•	•
Sailboat Cove*	•	•	•	•	•	•	•	•	•	•	•	•	•	•	•	•	•	•	•	•

* Clay County Parks • Handicap Accessible Facility Available

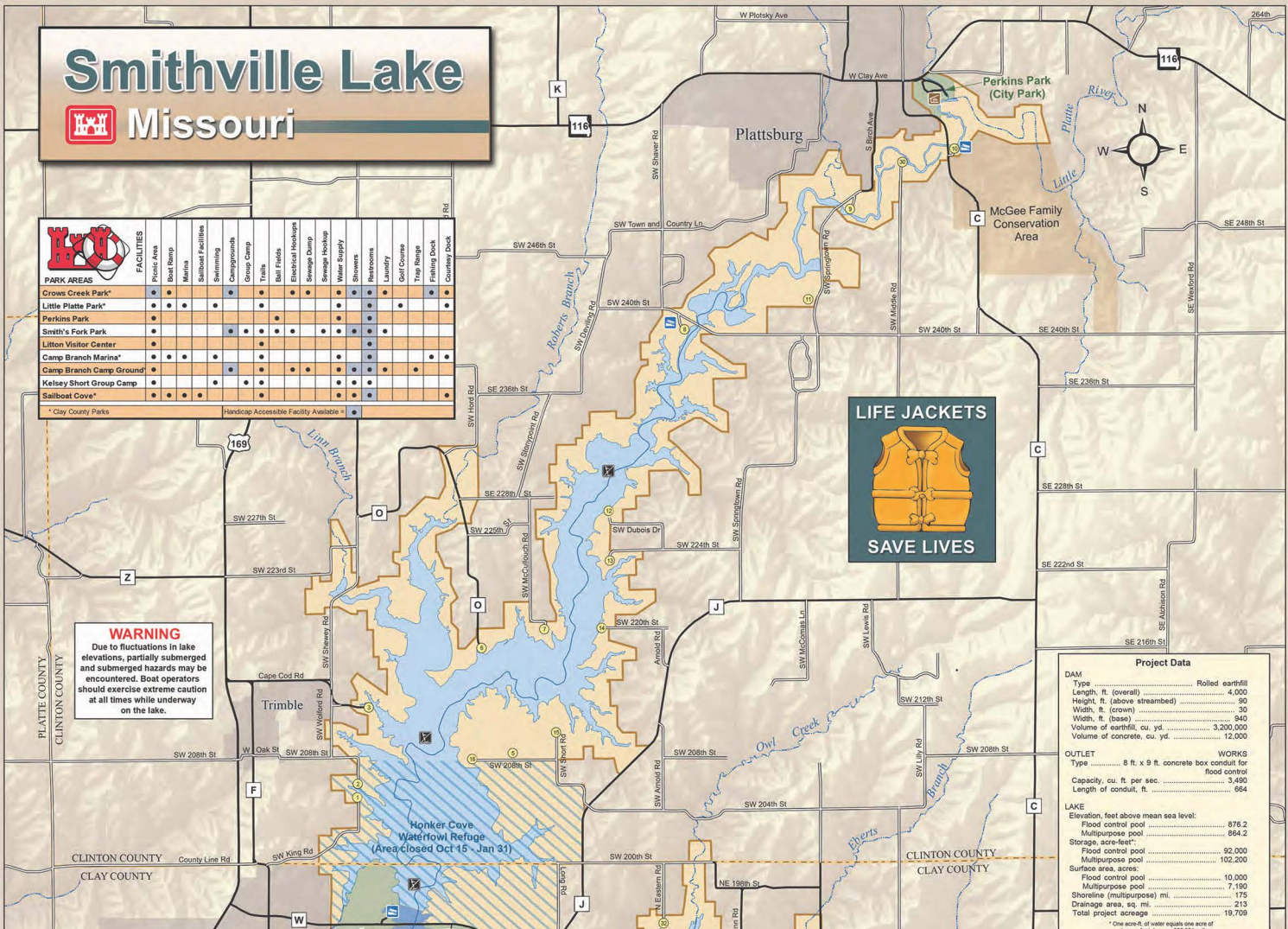
WARNING
Due to fluctuations in lake elevations, partially submerged and submerged hazards may be encountered. Boat operators should exercise extreme caution at all times while underway on the lake.

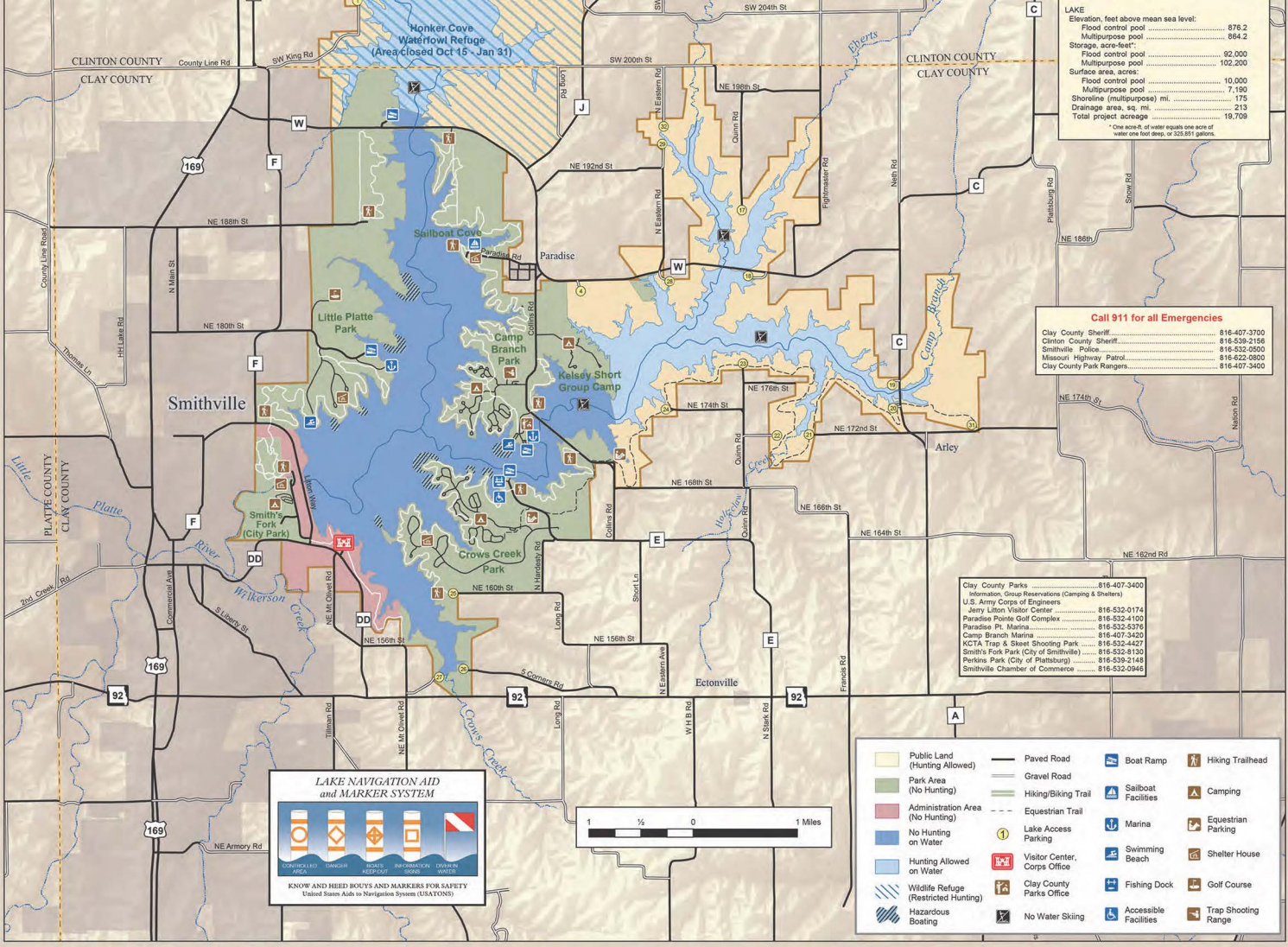
LIFE JACKETS

SAVE LIVES

Project Data	
DAM	
Type Rolled earthfill
Length, ft. (overall) 4,000
Height, ft. (above streambed) 90
Width, ft. (crown) 30
Width, ft. (base) 940
Volume of earthfill, cu. yd. 3,200,000
Volume of concrete, cu. yd. 12,000
OUTLET	
Type 8 ft. x 9 ft. concrete box conduit for flood control
Capacity, cu. ft. per sec. 3,490
Length of conduit, ft. 664
LAKE	
Elevation, feet above mean sea level:	
Flood control pool 876.2
Multipurpose pool 864.2
Storage, acre-feet:	
Flood control pool 92,000
Multipurpose pool 102,200
Surface area, acres:	
Flood control pool 10,000
Multipurpose pool 7,190
Shoreline (multipurpose) mi. 175
Drainage area, sq. mi. 213
Total project acreage 19,708

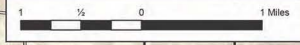
* One acre-ft. of water equals one acre of water one foot deep, or 325,851 gallons.





LAKE NAVIGATION AID and MARKER SYSTEM

KNOW AND HEED BUOYS AND MARKERS FOR SAFETY
United States Aids to Navigation System (USATONS)



LAKE

Elevation, feet above mean sea level:	876.2
Flood control pool	876.2
Multipurpose pool	864.2
Storage, acre-feet:	92,000
Flood control pool	92,000
Multipurpose pool	102,200
Surface area, acres:	10,000
Flood control pool	7,190
Multipurpose pool	1,175
Shoreline (multipurpose) mi.	213
Drainage area, sq. mi.	19,709
Total project acreage	19,709

* One acre-ft. of water equals one acre of water one foot deep, or 325,851 gallons.

Call 911 for all Emergencies

Clay County Sheriff	816-407-3700
Clayton County Sheriff	816-538-2158
Smithville Police	816-532-0500
Missouri Highway Patrol	816-622-0600
Clay County Park Rangers	816-407-3400

Clay County Parks 816-407-3400

Information, Group Reservations (Camping & Shelters)

U.S. Army Corps of Engineers	816-532-2158
Jerry Lilton Visitor Center	816-532-0174
Paradise Prairie Golf Complex	816-532-4108
Paradise Pt. Marina	816-532-5376
Camp Branch Marina	816-407-3420
NCTA Trap & Steel Shooting Park	816-532-4427
Smith's Fork Park (City of Smithville)	816-532-8139
Perkins Park (City of Plattburg)	816-539-2148
Smithville Chamber of Commerce	816-532-0946

Public Land (Hunting Allowed)	Paved Road	Boat Ramp	Hiking Trailhead
Park Area (No Hunting)	Gravel Road	Sailboat Facilities	Camping
Administration Area (No Hunting)	Hiking/Biking Trail	Marina	Equestrian Parking
No Hunting on Water	Equestrian Trail	Swimming Beach	Shelter House
Hunting Allowed on Water	Lake Access Parking	Visitor Center, Corps Office	Fishing Dock
Wildlife Refuge (Restricted Hunting)	Clay County Parks Office	Fishing Dock	Golf Course
Hazardous Boating	No Water Skiing	Accessible Facilities	Trap Shooting Range